

\$0 - # #112 111 Broadway Bv, Sherwood Park

MLS® #E4314318

\$0

Bedroom, Bathroom, 2,400 sqft

Retail on 0.00 Acres

Broadview Park, Sherwood Park, AB

2,400-2,850 sq.ft retail/office space located on Broadway Boulevard in Sherwood Park. Other professional tenants include: Core Wellness and Chiropractic, Drift Float Studio & Massage, Celtic Management, Park Veterinary, and Investors Group. Located near Windsor Plywood, Align Orthodontics, and the Bethel Transit Terminal

Built in 2003

Essential Information

MLS® # E4314318

Square Footage 2,400

Acres 0.00

Year Built 2003

Type Retail

Community Information

Address # #112 111 Broadway Bv

Area Strathcona

Subdivision Broadview Park

City Sherwood Park

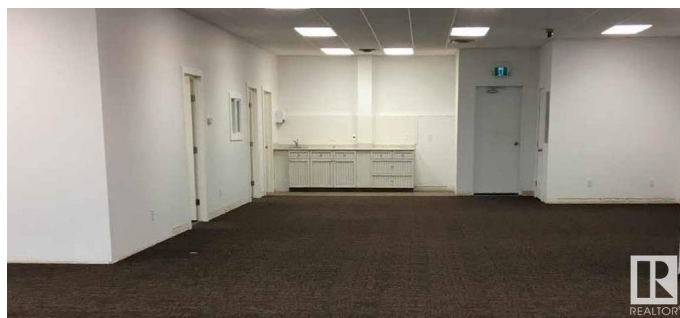
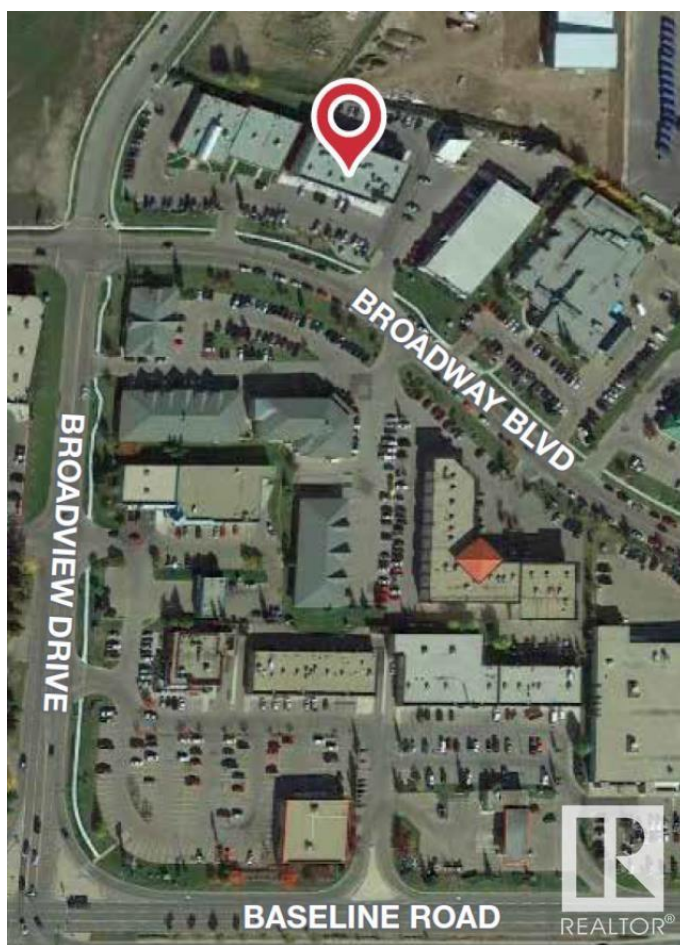
Province AB

Postal Code T8H 1T1

Exterior

Construction Concrete, Wood Frame

Additional Information



Date Listed September 21st, 2022

Zoning C5

DATA IS DEEMED RELIABLE BUT IS NOT GUARANTEED ACCURATE BY THE REALTORS® ASSOCIATION OF EDMONTON. COPYRIGHT 2024 BY THE REALTORS® ASSOCIATION OF EDMONTON. ALL RIGHTS RESERVED. Trademarks are owned or controlled by the Canadian Real Estate Association (CREA) and identify real estate professionals who are members of CREA (REALTOR®, REALTORS®) and/or the quality of services they provide (MLS®, Multiple Listing Service®)

Listing information last updated on May 5th, 2024 at 12:48pm MDT