

## \$860,000 - # #530 280 Portage Cl, Sherwood Park

MLS® #E4314383

**\$860,000**

Bedroom, Bathroom, 3,175 sqft

Office on 0.00 Acres

Buckingham Business Park, Sherwood Park,  
AB

3,175 sq.ft office/warehouse space. Storage yard space available for lease. Grade level loading door 12'x14'. 2 stage sump. Minimum 20' clear ceiling height, 30' ceiling height at the peak.

Built in 2013

### Essential Information

MLS® #	E4314383
Price	\$860,000
Square Footage	3,175
Acres	0.00
Year Built	2013
Type	Office

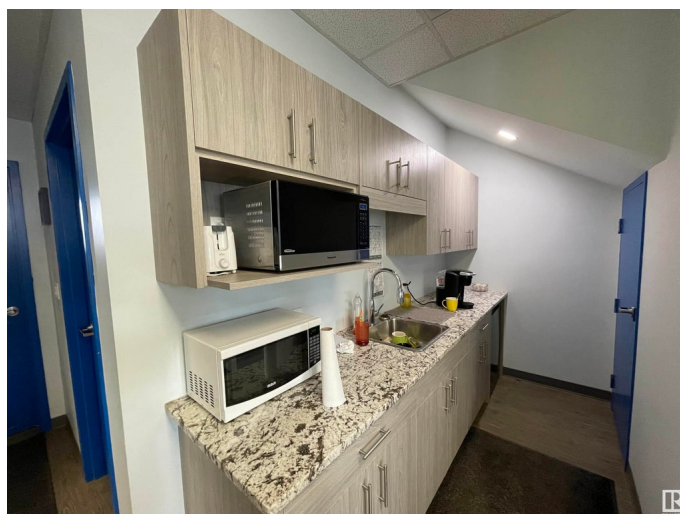
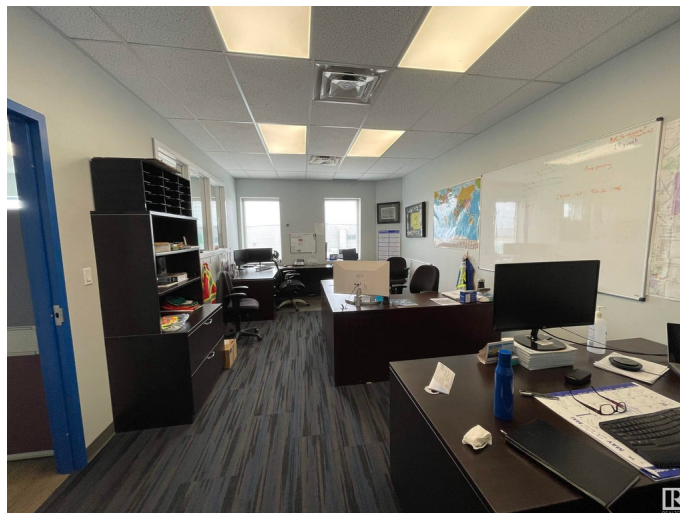
### Community Information

Address	# #530 280 Portage Cl
Area	Strathcona
Subdivision	Buckingham Business Park
City	Sherwood Park
Province	AB
Postal Code	T8H 2R6

### Exterior

Construction	Steel Frame
--------------	-------------

### Additional Information



Date Listed September 21st, 2022

Zoning C5

DATA IS DEEMED RELIABLE BUT IS NOT GUARANTEED ACCURATE BY THE REALTORS® ASSOCIATION OF EDMONTON. COPYRIGHT 2024 BY THE REALTORS® ASSOCIATION OF EDMONTON. ALL RIGHTS RESERVED. Trademarks are owned or controlled by the Canadian Real Estate Association (CREA) and identify real estate professionals who are members of CREA (REALTOR®, REALTORS®) and/or the quality of services they provide (MLS®, Multiple Listing Service®)

Listing information last updated on May 17th, 2024 at 10:01pm MDT