

\$649,988 - 16141 142 St Nw, Edmonton

MLS® #E4317845

\$649,988

Bedroom, Bathroom, 4,618 sqft
Industrial on 0.00 Acres

Rampart Industrial, Edmonton, AB

Office / Warehouse Condos available in Northwest Edmonton. Easy and quick access to Anthony Henday Drive, St. Albert Trail and Yellowhead Trail. Radiant heating and sumps in each bay. 125-200 amp, 120/208 volt, 3 phase power per bay. 25' clear ceiling height and 14x16 grade loading doors. Includes second floor concrete mezzanine space. This unit offers 4,618 sq. ft. If you're needing more space Unit 10 16139 142 st is also available with no demising wall combined space 9,257 sq.ft.

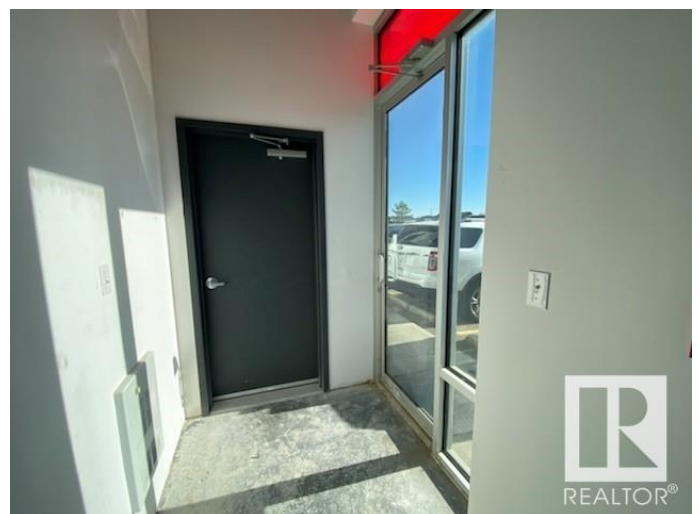
Built in 2015

Essential Information

MLS® #	E4317845
Price	\$649,988
Square Footage	4,618
Acres	0.00
Year Built	2015
Type	Industrial

Community Information

Address	16141 142 St Nw
Area	Edmonton
Subdivision	Rampart Industrial
City	Edmonton
Province	AB



Postal Code T6V 0M7

Exterior

Construction Concrete

Additional Information

Date Listed October 21st, 2022

DATA IS DEEMED RELIABLE BUT IS NOT GUARANTEED ACCURATE BY THE REALTORS® ASSOCIATION OF EDMONTON. COPYRIGHT 2024 BY THE REALTORS® ASSOCIATION OF EDMONTON. ALL RIGHTS RESERVED.Trademarks are owned or controlled by the Canadian Real Estate Association (CREA) and identify real estate professionals who are members of CREA (REALTOR®, REALTORS®) and/or the quality of services they provide (MLS®, Multiple Listing Service®)

Listing information last updated on May 15th, 2024 at 4:02pm MDT