

# \$3,500,000 - 17103 23 Av Nw, Edmonton

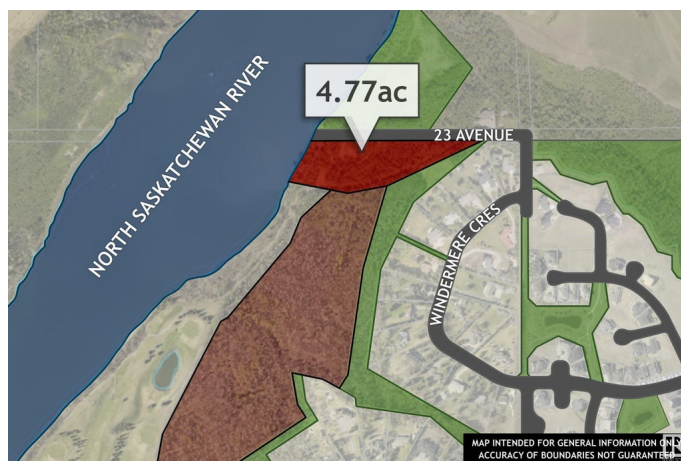
MLS® #E4335400

**\$3,500,000**

Bedroom, Bathroom,  
Land Commercial on 4.77 Acres

River Valley Windemere, Edmonton, AB

Once-in-a-lifetime opportunity to own land in the river valley! 4.77 acres of privately-owned land with stunning views of the North Saskatchewan, River Ridge golf course and the natural beauty of Edmonton's river valley. Located in beautiful Windemere, this is a truly unique building opportunity on a private, gently-sloping parcel, down within the valley itself. Visit REALTOR® website for additional information.



## Essential Information

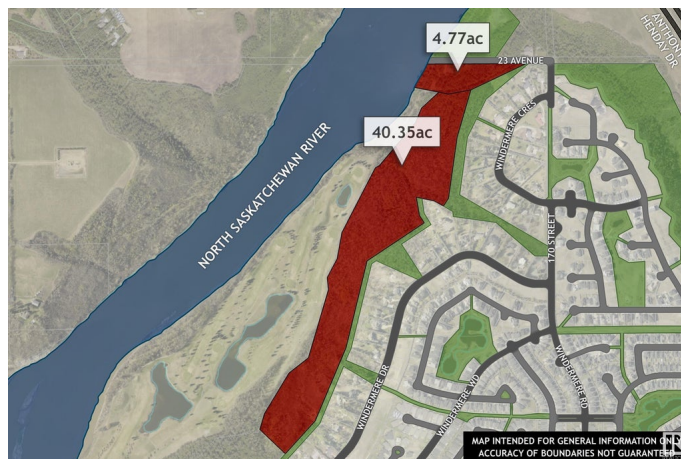
MLS® #	E4335400
Price	\$3,500,000
Acres	4.77
Type	Land Commercial

## Community Information

Address	17103 23 Av Nw
Area	Edmonton
Subdivision	River Valley Windemere
City	Edmonton
Province	AB
Postal Code	T6R 0T0

## Amenities

Features	No Through Road, Backs Onto Park/Trees, Private Setting, River Valley View, River View, See Remarks
----------	---



**Additional Information**

Date Listed                      April 13th, 2023

DATA IS DEEMED RELIABLE BUT IS NOT GUARANTEED ACCURATE BY THE REALTORS® ASSOCIATION OF EDMONTON. COPYRIGHT 2024 BY THE REALTORS® ASSOCIATION OF EDMONTON. ALL RIGHTS RESERVED.Trademarks are owned or controlled by the Canadian Real Estate Association (CREA) and identify real estate professionals who are members of CREA (REALTOR®, REALTORS®) and/or the quality of services they provide (MLS®, Multiple Listing Service®)

Listing information last updated on May 10th, 2024 at 8:48am MDT