

\$3,500,000 - 17303 23 Av Nw, Edmonton

MLS® #E4335401

\$3,500,000

Bedroom, Bathroom,
Land Commercial on 40.35 Acres

River Valley Windemere, Edmonton, AB

Once-in-a-lifetime opportunity to own land in the river valley! 40.35 acres of privately-owned land with stunning views of the North Saskatchewan, River Ridge golf course and the natural beauty of Edmonton's river valley. Located in beautiful Windemere, this is a truly unique building opportunity on a private, gently-sloping parcel, down within the valley itself. Visit REALTOR® website for additional information.

Essential Information

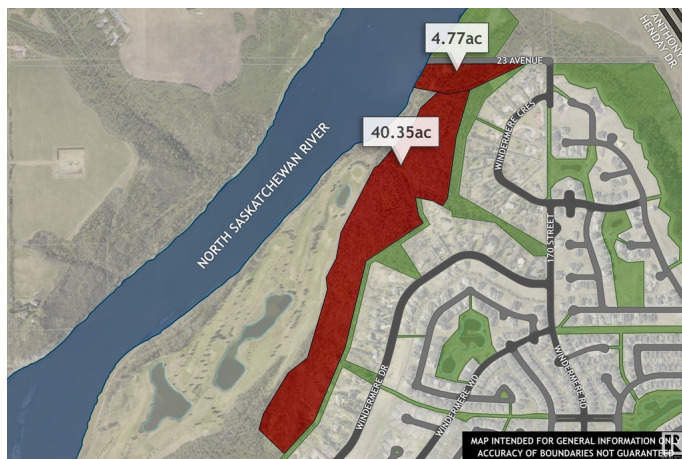
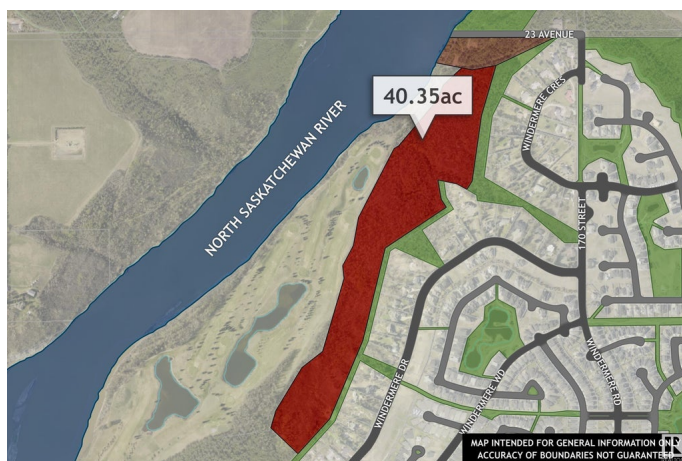
MLS® #	E4335401
Price	\$3,500,000
Acres	40.35
Type	Land Commercial

Community Information

Address	17303 23 Av Nw
Area	Edmonton
Subdivision	River Valley Windemere
City	Edmonton
Province	AB
Postal Code	T6R 0T0

Amenities

Features	No Through Road, Backs Onto Park/Trees, Private Setting, River Valley View, River View, See Remarks
----------	---



Additional Information

Date Listed April 13th, 2023

DATA IS DEEMED RELIABLE BUT IS NOT GUARANTEED ACCURATE BY THE REALTORS® ASSOCIATION OF EDMONTON. COPYRIGHT 2024 BY THE REALTORS® ASSOCIATION OF EDMONTON. ALL RIGHTS RESERVED.Trademarks are owned or controlled by the Canadian Real Estate Association (CREA) and identify real estate professionals who are members of CREA (REALTOR®, REALTORS®) and/or the quality of services they provide (MLS®, Multiple Listing Service®)

Listing information last updated on May 13th, 2024 at 11:47am MDT