

# **\$3,200,000 - 9522 To 9548 102a Av Nw, Edmonton**

MLS® #E4352308

**\$3,200,000**

Bedroom, Bathroom,  
Land Commercial on 0.93 Acres

Boyle Street, Edmonton, AB

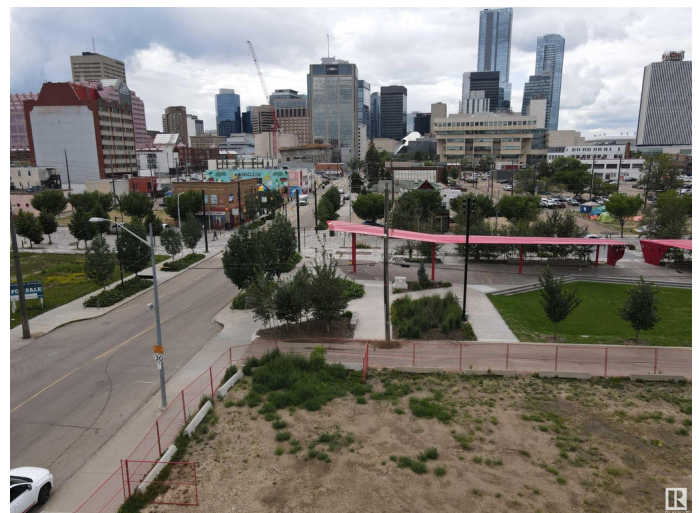
A rare opportunity to acquire this 0.927 Acres (10 Lots together) in "THE QUARTERS" of downtown Edmonton. Excellent holding property with huge potential. The subject property also comes with a current income stream from Impark. This property is just over 40,000 Sqft. and it's conveniently situated with respect to the city centre and major traffic routes in all directions including right beside the newly completed L.R.T. station. The Subject Property is Located between 95th and 96th Street on 102A Avenue in the central sector of Edmonton in the neighborhood of Boyle Street with a ton of recent and current re-development, like the newly constructed DoubleTree by Hilton Hotel and 28 Storey tower Jasper Heights. This is a great opportunity with future potential. Presently there's a rental contract on the lots.

## **Essential Information**

MLS® #	E4352308
Price	\$3,200,000
Acres	0.93
Type	Land Commercial

## **Community Information**

Address	9522 To 9548 102a Av Nw
Area	Edmonton



Subdivision	Boyle Street
City	Edmonton
Province	AB
Postal Code	T5H 0G1

**Additional Information**

Date Listed	July 27th, 2023
Zoning	DC 1

DATA IS DEEMED RELIABLE BUT IS NOT GUARANTEED ACCURATE BY THE REALTORS® ASSOCIATION OF EDMONTON. COPYRIGHT 2024 BY THE REALTORS® ASSOCIATION OF EDMONTON. ALL RIGHTS RESERVED.Trademarks are owned or controlled by the Canadian Real Estate Association (CREA) and identify real estate professionals who are members of CREA (REALTOR®, REALTORS®) and/or the quality of services they provide (MLS®, Multiple Listing Service®)

Listing information last updated on May 11th, 2024 at 4:01am MDT