

\$489,000 - 5018 50 Street, Rural Thorhild County

MLS® #E4430192

\$489,000

4 Bedroom, 2.50 Bathroom, 2,253 sqft

Rural on 1.31 Acres

None, Rural Thorhild County, AB

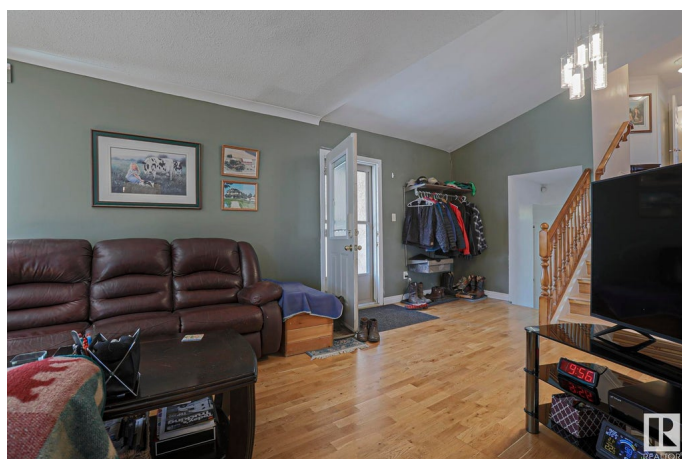
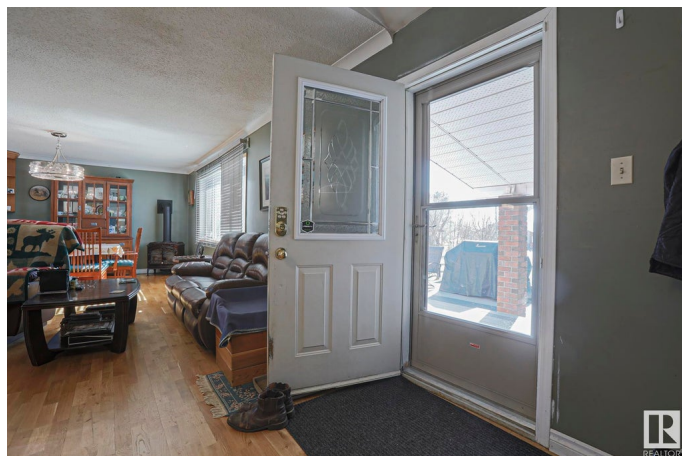
COUNTRY LIVING RIGHT OFF THE HWY!

Motivated Sellers are Offering This Unique 5 Level Split With 4 Bedrooms and 3 Baths, Main and Lower Level Laundry. Boiler System, In-floor Heating .The 2 Undeveloped Lower Levels Allow For Multiple Options For Possible Future Developed Areas! Upgrades Include New main Floor Paint, New Main Floor Bathroom, Featuring an Expansive Kitchen With Stainless Appliances, Gas Stove and Fireplace! The Bonus Sized Primary Has Easy Access to the Large 4 Pce Bathroom. A Large East Facing Composite Deck - An Attached Heated Dbl Garage All on Over an Acre of Property! A 3' Grade Beam Installed as Prep For a 50'x80' Shop. LOW LOW TAXES!! Minutes to Shopping in Redwater and Close to The Expansion Plants in Fort Saskatchewan! Well Worth a Look!

Built in 1970

Essential Information

| | |
|----------------|-----------|
| MLS® # | E4430192 |
| Price | \$489,000 |
| Bedrooms | 4 |
| Bathrooms | 2.50 |
| Full Baths | 2 |
| Half Baths | 1 |
| Square Footage | 2,253 |



| | |
|------------|------------------------|
| Acres | 1.31 |
| Year Built | 1970 |
| Type | Rural |
| Sub-Type | Detached Single Family |
| Style | 5 Level Split |
| Status | Active |

Community Information

| | |
|-------------|-----------------------|
| Address | 5018 50 Street |
| Area | Rural Thorhild County |
| Subdivision | None |
| City | Rural Thorhild County |
| County | ALBERTA |
| Province | AB |
| Postal Code | T0A 2R0 |

Amenities

| | |
|----------|------------------------------------|
| Features | Deck, Front Porch, No Smoking Home |
|----------|------------------------------------|

Interior

| | |
|--------------|-----------------------------------|
| Heating | In Floor Heat System, Natural Gas |
| Fireplace | Yes |
| Stories | 3 |
| Has Basement | Yes |
| Basement | Full, Unfinished |

Exterior

| | |
|-------------------|--|
| Exterior | Wood |
| Exterior Features | Corner Lot, Flat Site, Fruit Trees/Shrubs, Landscaped, Low Maintenance Landscape |
| Construction | Wood |
| Foundation | Concrete Perimeter |

Additional Information

| | |
|----------------|------------------|
| Date Listed | April 10th, 2025 |
| Days on Market | 52 |
| Zoning | Zone 60 |

DATA IS DEEMED RELIABLE BUT IS NOT GUARANTEED ACCURATE BY THE REALTORS® ASSOCIATION OF EDMONTON. COPYRIGHT 2025 BY THE REALTORS® ASSOCIATION OF EDMONTON. ALL RIGHTS RESERVED. Trademarks are owned or controlled by the Canadian Real Estate Association (CREA) and identify real

estate professionals who are members of CREA (REALTOR®®, REALTORS®®) and/or the quality of services they provide (MLS®®, Multiple Listing Service®®)

Listing information last updated on June 1st, 2025 at 4:17am MDT