

## \$564,000 - 27 Everitt Drive, St. Albert

MLS® #E4433773

**\$564,000**

4 Bedroom, 2.50 Bathroom, 2,138 sqft

Single Family on 0.00 Acres

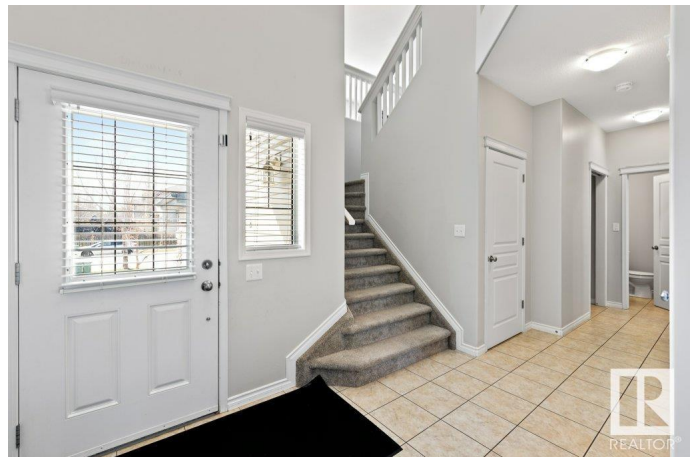
Erin Ridge, St. Albert, AB

GORGEOUS 2,138 sq. ft. Two-Story Home with 9' Ceilings! Flooded with natural light from large windows, this open-concept beauty features a spacious foyer, gleaming hardwood floors, a cozy gas fireplace, and a stunning kitchen. Enjoy tall espresso cabinets with glass inserts, a wraparound island with raised breakfast bar, walk-in pantry, stainless steel appliances, and a bright dining nook with patio doors to the rear deck with BBQ gas hook-up and backyard. Main floor laundry and CENTRAL A/C included! The unique split staircase leads to three bedrooms, including a generous primary suite with 4-piece ensuite—soaker tub, separate shower, and walk-in closet. Huge 20' x 16' bonus room perfect for family time or a playroom. The finished basement adds a fourth bedroom, rec room, and office space. Just minutes from Lois Hole Elementary & Sister Alphonse Academy, with parks, playgrounds, and amenities nearby!

Built in 2009

### Essential Information

MLS® #	E4433773
Price	\$564,000
Bedrooms	4
Bathrooms	2.50



Full Baths	2
Half Baths	1
Square Footage	2,138
Acres	0.00
Year Built	2009
Type	Single Family
Sub-Type	Detached Single Family
Style	2 Storey
Status	Active

### **Community Information**

Address	27 Everitt Drive
Area	St. Albert
Subdivision	Erin Ridge
City	St. Albert
County	ALBERTA
Province	AB
Postal Code	T8N 3T4

### **Amenities**

Amenities	Air Conditioner, Deck, See Remarks
Parking	Double Garage Attached

### **Interior**

Interior Features	ensuite bathroom
Appliances	Air Conditioning-Central, Dishwasher-Built-In, Dryer, Garage Control, Garage Opener, Garburator, Microwave Hood Fan, Refrigerator, Stove-Electric, Washer, Window Coverings
Heating	Forced Air-1, Natural Gas
Stories	3
Has Basement	Yes
Basement	Full, Finished

### **Exterior**

Exterior	Wood, Stone, Vinyl
Exterior Features	Fenced, Flat Site, No Back Lane, Public Transportation, Schools, Shopping Nearby
Roof	Asphalt Shingles
Construction	Wood, Stone, Vinyl

Foundation                      Concrete Perimeter

**Additional Information**

Date Listed                      May 1st, 2025

Days on Market                4

Zoning                            Zone 24

DATA IS DEEMED RELIABLE BUT IS NOT GUARANTEED ACCURATE BY THE REALTORS® ASSOCIATION OF EDMONTON. COPYRIGHT 2025 BY THE REALTORS® ASSOCIATION OF EDMONTON. ALL RIGHTS RESERVED.Trademarks are owned or controlled by the Canadian Real Estate Association (CREA) and identify real estate professionals who are members of CREA (REALTOR®, REALTORS®) and/or the quality of services they provide (MLS®, Multiple Listing Service®)

Listing information last updated on May 4th, 2025 at 10:17pm MDT