

\$439,900 - 7 Marion Crescent, St. Albert

MLS® #E4436853

\$439,900

5 Bedroom, 2.00 Bathroom, 993 sqft

Single Family on 0.00 Acres

Mission (St. Albert), St. Albert, AB

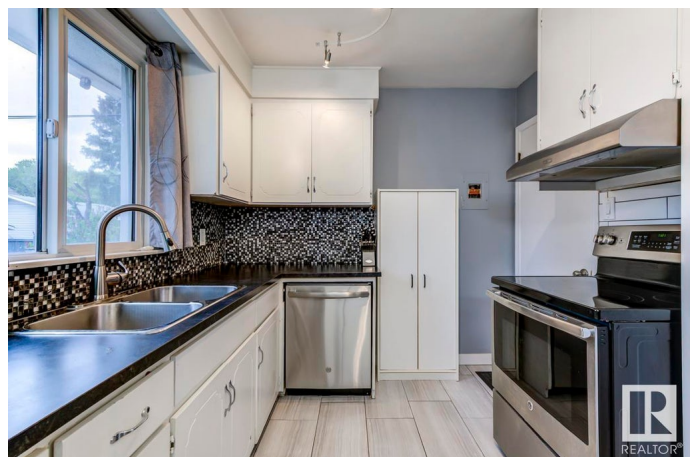
Come home to CASHFLOW in this updated 3 bedroom bungalow with a 2 bedroom LEGAL SUITE! This home offers over 1900 sqft of total living space on a 50x150â€™™ lot. The main floor unit features 3 spacious bedrooms, large living and dining areas, a bright kitchen with stainless appliances plus a private laundry room downstairs. The LEGAL basement suite has a separate entrance, 2 large bedrooms, full kitchen, full bath with tub/shower and its own laundry in-suite. Updates include newer windows, shingles (house) and hot water tank. Outside youâ€™™ll find a sunny, landscaped yard with a large deck and a MASSIVE 23x26' Double Garage (needs some TLC). Ideally located on a quiet Crescent in the heart of St Albert - just steps to VJM & St Albert High and walking distance to St Albert's incredible River Valley, Farmer's Market, plus shops, restaurants and the library. Whether you live in or rent out, this property offers exceptional value & flexibility. Donâ€™™t miss your chance to get a GREAT INVESTMENT in ST. ALBERT!

Built in 1958

Essential Information

MLS® # E4436853

Price \$439,900



Bedrooms	5
Bathrooms	2.00
Full Baths	2
Square Footage	993
Acres	0.00
Year Built	1958
Type	Single Family
Sub-Type	Detached Single Family
Style	Bungalow
Status	Active

Community Information

Address	7 Marion Crescent
Area	St. Albert
Subdivision	Mission (St. Albert)
City	St. Albert
County	ALBERTA
Province	AB
Postal Code	T8N 1L1

Amenities

Amenities	Deck, No Smoking Home, Vinyl Windows
Parking Spaces	4
Parking	220 Volt Wiring, Double Garage Detached, Over Sized, RV Parking

Interior

Appliances	Dishwasher-Built-In, Dryer, Garage Control, Garage Opener, Stacked Washer/Dryer, Storage Shed, Washer, Window Coverings, Refrigerators-Two, Stoves-Two
Heating	Forced Air-2, Natural Gas
Stories	2
Has Suite	Yes
Has Basement	Yes
Basement	Full, Finished

Exterior

Exterior	Wood, Stucco
Exterior Features	Back Lane, Fenced, Flat Site, Playground Nearby, Public Transportation, Schools

Roof	Asphalt Shingles
Construction	Wood, Stucco
Foundation	Concrete Perimeter

Additional Information

Date Listed	May 16th, 2025
Days on Market	18
Zoning	Zone 24

DATA IS DEEMED RELIABLE BUT IS NOT GUARANTEED ACCURATE BY THE REALTORS® ASSOCIATION OF EDMONTON. COPYRIGHT 2025 BY THE REALTORS® ASSOCIATION OF EDMONTON. ALL RIGHTS RESERVED.Trademarks are owned or controlled by the Canadian Real Estate Association (CREA) and identify real estate professionals who are members of CREA (REALTOR®, REALTORS®) and/or the quality of services they provide (MLS®, Multiple Listing Service®)

Listing information last updated on June 3rd, 2025 at 6:02am MDT