

\$699,900 - 10435 10437 150 Street, Edmonton

MLS® #E4437611

\$699,900

10 Bedroom, 4.00 Bathroom, 2,043 sqft

Single Family on 0.00 Acres

Canora, Edmonton, AB

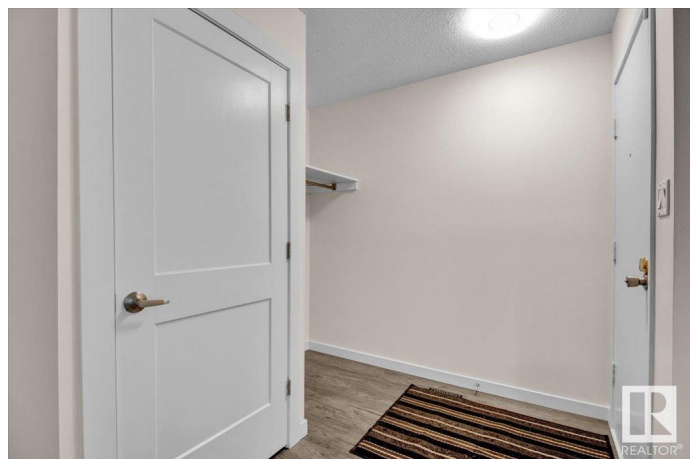
Don't miss this beautifully RENOVATED side-by-side duplex in the sought-after Canora community! Featuring 4 KITCHENS, 10 BEDROOMS, this property is PACKED with POTENTIAL! Step inside to be greeted by an abundance of light streaming through a MASSIVE front window, illuminating the spacious living area. The open-concept layout flows seamlessly into the dining space & kitchen, complete with WHITE CABINETRY & STAINLESS STEEL APPLIANCES. Down the hall, you'll find a LARGE PRIMARY BEDROOM, 2 ADDITIONAL BEDROOMS, & a sleek 4PC BATH! The basement offers even more, with a 2nd KITCHEN featuring WHITE CABINETRY & STAINLESS STEEL APPLIANCES, LARGE LIVING AREA AND 2 MORE BEDROOMS. EACH UNIT HAS ITS OWN LAUNDRY adding extra convenience! Enjoy a MASSIVE BACKYARD & an unbeatable location with Holy cross elementary/junior high across the street, public transportation and shopping walking distance away.

Built in 1974

Essential Information

MLS® # E4437611

Price \$699,900



Bedrooms	10
Bathrooms	4.00
Full Baths	4
Square Footage	2,043
Acres	0.00
Year Built	1974
Type	Single Family
Sub-Type	Duplex Side By Side
Style	Raised Bungalow
Status	Active

Community Information

Address	10435 10437 150 Street
Area	Edmonton
Subdivision	Canora
City	Edmonton
County	ALBERTA
Province	AB
Postal Code	T5P 1P7

Amenities

Amenities	See Remarks
Parking Spaces	4
Parking	See Remarks

Interior

Appliances	See Remarks
Heating	Forced Air-1, Natural Gas
Stories	2
Has Suite	Yes
Has Basement	Yes
Basement	Full, Finished

Exterior

Exterior	Wood, Brick, Stucco
Exterior Features	Back Lane, Fenced, Flat Site, Playground Nearby, Schools, Shopping Nearby
Roof	Asphalt Shingles
Construction	Wood, Brick, Stucco

Foundation Concrete Perimeter

Additional Information

Date Listed May 21st, 2025

Days on Market 1

Zoning Zone 21

DATA IS DEEMED RELIABLE BUT IS NOT GUARANTEED ACCURATE BY THE REALTORS® ASSOCIATION OF EDMONTON. COPYRIGHT 2025 BY THE REALTORS® ASSOCIATION OF EDMONTON. ALL RIGHTS RESERVED.Trademarks are owned or controlled by the Canadian Real Estate Association (CREA) and identify real estate professionals who are members of CREA (REALTOR®, REALTORS®) and/or the quality of services they provide (MLS®, Multiple Listing Service®)

Listing information last updated on May 22nd, 2025 at 4:17pm MDT