

\$1,300,000 - 10525 134 Street, Edmonton

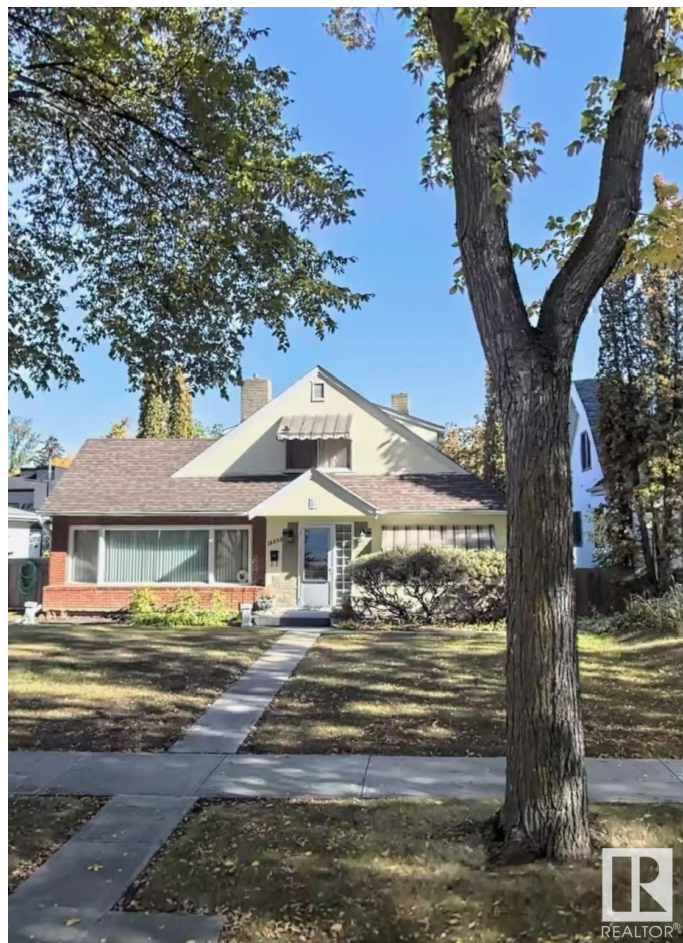
MLS® #E4438119

\$1,300,000

0 Bedroom, 0.00 Bathroom,
Single Family on 0.00 Acres

Glenora, Edmonton, AB

Opportunity Knocks in Glenora! This 50' x 140' lot is ready for redevelopment. Calling all developers, investors and dreamers, this home is currently occupied and liveable but at the end of its life and ready for new owners. Build your dream home on this desirable lot or subdivide and redevelop as an investment. Endless possibilities as the city will allow 8 units on this sized lot. Located on a quiet street with abundance of mature trees, easy commute to downtown, close to new LRT, shopping, schools and ravine. Location, Location, Location! Beautiful lot with an abundance of mature perennials & trees. Offered at \$1,300,000!



Essential Information

| | |
|-----------|-----------------|
| MLS® # | E4438119 |
| Price | \$1,300,000 |
| Bathrooms | 0.00 |
| Acres | 0.00 |
| Type | Single Family |
| Sub-Type | Vacant Lot/Land |
| Status | Active |

Community Information

| | |
|---------|------------------|
| Address | 10525 134 Street |
| Area | Edmonton |

| | |
|-------------|----------|
| Subdivision | Glenora |
| City | Edmonton |
| County | ALBERTA |
| Province | AB |
| Postal Code | T5N 2B4 |

Exterior

| | |
|-------------------|--|
| Exterior Features | Back Lane, Fenced, Flat Site, Landscaped, Playground Nearby, Public Transportation, Schools, Shopping Nearby |
| Lot Description | 50' x 140 ' |

Additional Information

| | |
|----------------|----------------|
| Date Listed | May 23rd, 2025 |
| Days on Market | 2 |
| Zoning | Zone 11 |

DATA IS DEEMED RELIABLE BUT IS NOT GUARANTEED ACCURATE BY THE REALTORS® ASSOCIATION OF EDMONTON. COPYRIGHT 2025 BY THE REALTORS® ASSOCIATION OF EDMONTON. ALL RIGHTS RESERVED. Trademarks are owned or controlled by the Canadian Real Estate Association (CREA) and identify real estate professionals who are members of CREA (REALTOR®, REALTORS®) and/or the quality of services they provide (MLS®, Multiple Listing Service®)

Listing information last updated on May 25th, 2025 at 9:47am MDT