

## \$849,000 - 47 Rosewood Way, St. Albert

MLS® #E4439931

**\$849,000**

3 Bedroom, 2.50 Bathroom, 2,605 sqft

Single Family on 0.00 Acres

Riverside (St. Albert), St. Albert, AB

WALKOUT BACKING ON POND....Ready to Move in. Brand New 2604 Square feet full walk out backing on pond. West facing house with east facing backyard with pond view. Huge size deck and covered balcony attached to Master bedroom. Maintenance free deck and balcony with metal hand rails. Oversized front attached garage. All levels 9 feet high. Open floor plan with open to above high ceiling in the living room. Fireplace mantle with tiles and wood work to the ceiling height. Lots of windows with daylight coming in. Custom kitchen cabinets with butler's pantry. Custom cabinets with Quartz counter tops through out. Huge size bonus room with nice view. Three bedrooms. Master Ensuite with free standing jacuzzi and custom shower. Premium finishes with feature walls, wall panels and glass railings. 8 ft high interior doors. Gold and black plumbing fixtures. High efficiency furnace and tank. Full walk out basement with lot of windows and door for future development. Much more....

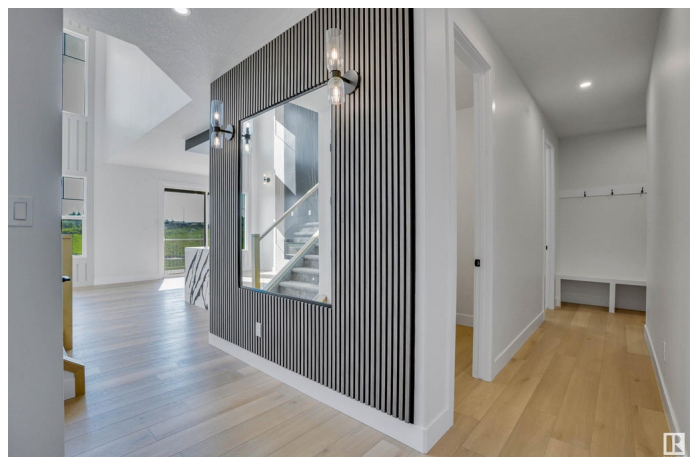
Built in 2025

### Essential Information

MLS® # E4439931

Price \$849,000

Bedrooms 3



Bathrooms	2.50
Full Baths	2
Half Baths	1
Square Footage	2,605
Acres	0.00
Year Built	2025
Type	Single Family
Sub-Type	Detached Single Family
Style	2 Storey
Status	Active

### Community Information

Address	47 Rosewood Way
Area	St. Albert
Subdivision	Riverside (St. Albert)
City	St. Albert
County	ALBERTA
Province	AB
Postal Code	T8N 8B2

### Amenities

Amenities	Ceiling 9 ft., Deck, Walkout Basement
Parking Spaces	4
Parking	Double Garage Attached

### Interior

Interior Features	ensuite bathroom
Appliances	Garage Opener, Hood Fan
Heating	Forced Air-1, Natural Gas
Fireplaces	Mantel
Stories	2
Has Basement	Yes
Basement	Full, Unfinished

### Exterior

Exterior	Wood, Vinyl
Exterior Features	Golf Nearby, Playground Nearby, Ravine View, Schools
Roof	Asphalt Shingles
Construction	Wood, Vinyl

Foundation                      Slab

**Additional Information**

Date Listed                      June 2nd, 2025

Days on Market                90

Zoning                            Zone 24

DATA IS DEEMED RELIABLE BUT IS NOT GUARANTEED ACCURATE BY THE REALTORS® ASSOCIATION OF EDMONTON. COPYRIGHT 2025 BY THE REALTORS® ASSOCIATION OF EDMONTON. ALL RIGHTS RESERVED.Trademarks are owned or controlled by the Canadian Real Estate Association (CREA) and identify real estate professionals who are members of CREA (REALTOR®, REALTORS®) and/or the quality of services they provide (MLS®, Multiple Listing Service®)

Listing information last updated on August 31st, 2025 at 6:17pm MDT