

\$519,900 - 64 Bellevue Crescent, St. Albert

MLS® #E4443240

\$519,900

4 Bedroom, 3.00 Bathroom, 1,292 sqft

Single Family on 0.00 Acres

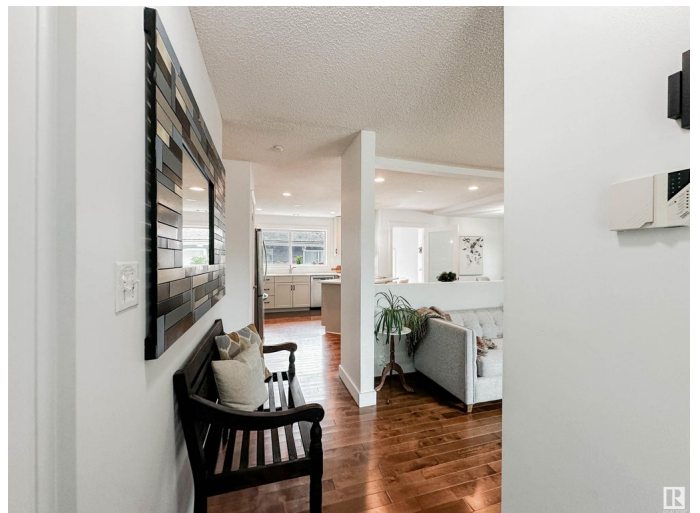
Braeside, St. Albert, AB

Beautifully renovated FF bungalow on a picturesque tree line street! This charming bungalow offers 4 bedrooms, 3 full bathrooms, FF basement, stunning curb appeal, rv parking & a double heated O/S garage. The open concept main floor features a charming living room w/ gleaming hardwood floors, brick decor fireplace, large windows adding tones of natural light, a renovated kitchen w/ upgraded cabinetry, SS appls, quartz countertops, eat up countertop & pantry! The spacious primary offers a renovated 3pc ensuite & closet space!! The main floor is complete with a 4pc bath & 2 more bedrooms. The F/F basement has a large family room, den, 3pc bathroom, 4th bedroom, & laundry. Backyard is ready for summer in your private yard w/ patio space, maintenance free fencing, shed & beautifully landscaping!! Updates include AC, Furnace, HWT, roof, flooring, paint, trim, doors the list goes on!!!

Built in 1971

Essential Information

MLS® #	E4443240
Price	\$519,900
Bedrooms	4
Bathrooms	3.00
Full Baths	3



Square Footage	1,292
Acres	0.00
Year Built	1971
Type	Single Family
Sub-Type	Detached Single Family
Style	Bungalow
Status	Active

Community Information

Address	64 Bellevue Crescent
Area	St. Albert
Subdivision	Braeside
City	St. Albert
County	ALBERTA
Province	AB
Postal Code	T8N 0A6

Amenities

Amenities	Air Conditioner, Patio, See Remarks
Parking	Double Garage Detached, Heated

Interior

Interior Features	ensuite bathroom
Appliances	Air Conditioning-Central, Dishwasher-Built-In, Dryer, Garage Control, Garage Opener, Hood Fan, Oven-Microwave, Refrigerator, Storage Shed, Stove-Electric, Washer, Window Coverings, TV Wall Mount, Garage Heater
Heating	Forced Air-1, Natural Gas
Fireplace	Yes
Fireplaces	Stone Facing
Stories	1
Has Basement	Yes
Basement	Full, Finished

Exterior

Exterior	Wood, Metal
Exterior Features	Corner Lot, Fenced, Landscaped, Playground Nearby, Public Transportation, Schools, Shopping Nearby, See Remarks
Roof	Asphalt Shingles

Construction	Wood, Metal
Foundation	Concrete Perimeter

Additional Information

Date Listed	June 19th, 2025
Days on Market	5
Zoning	Zone 24

DATA IS DEEMED RELIABLE BUT IS NOT GUARANTEED ACCURATE BY THE REALTORS® ASSOCIATION OF EDMONTON. COPYRIGHT 2025 BY THE REALTORS® ASSOCIATION OF EDMONTON. ALL RIGHTS RESERVED.Trademarks are owned or controlled by the Canadian Real Estate Association (CREA) and identify real estate professionals who are members of CREA (REALTOR®, REALTORS®) and/or the quality of services they provide (MLS®, Multiple Listing Service®)

Listing information last updated on June 24th, 2025 at 5:17pm MDT