

\$500,000 - 2 Haythorne Crescent, Sherwood Park

MLS® #E4444510

\$500,000

5 Bedroom, 3.00 Bathroom, 1,173 sqft

Single Family on 0.00 Acres

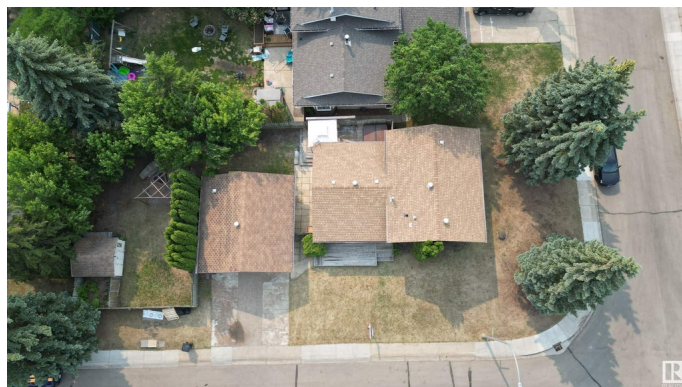
Woodbridge Farms, Sherwood Park, AB

Welcome to this beautifully renovated 4-level split in the heart of family-friendly Woodbridge Farms! Offering close to 2200 sq.ft. of total living space, this 5-bedroom, 3-bath home has been extensively updated since 2018. Enjoy a modern kitchen with ample cabinet space, new vinyl plank and carpet throughout, nearly all new windows, fresh paint, updated lighting, and renovated bathrooms including a 3pc ensuite. The spacious layout includes a bright living room, huge family room with gas fireplace, and a fully finished basement with 2 bedrooms, a den, and full bath. Outside, the massive backyard is ideal for entertaining with a deck, firepit, and plenty of space to play. An oversized double detached garage adds convenience. Surrounded by schools, parks, and playgrounds—this is the ultimate move-in-ready family home in Sherwood Park!

Built in 1979

Essential Information

MLS® #	E4444510
Price	\$500,000
Bedrooms	5
Bathrooms	3.00
Full Baths	3
Square Footage	1,173
Acres	0.00



Year Built	1979
Type	Single Family
Sub-Type	Detached Single Family
Style	4 Level Split
Status	Active

Community Information

Address	2 Haythorne Crescent
Area	Sherwood Park
Subdivision	Woodbridge Farms
City	Sherwood Park
County	ALBERTA
Province	AB
Postal Code	T8A 3Z8

Amenities

Amenities	Deck, Patio
Parking Spaces	4
Parking	Double Garage Attached

Interior

Interior Features	ensuite bathroom
Appliances	Dishwasher-Built-In, Dryer, Microwave Hood Fan, Refrigerator, Stove-Electric, Washer
Heating	Forced Air-1, Natural Gas
Stories	4
Has Basement	Yes
Basement	Full, Finished

Exterior

Exterior	Wood, Metal
Exterior Features	Corner Lot, Fenced, Park/Reserve, Picnic Area, Playground Nearby, Public Transportation, Schools, Shopping Nearby
Roof	Asphalt Shingles
Construction	Wood, Metal
Foundation	Concrete Perimeter

School Information

Elementary	Westboro Elementary
------------	---------------------

Middle	Sherwood Heights Junior
High	Salisbury Composite High

Additional Information

Date Listed	June 26th, 2025
Days on Market	10
Zoning	Zone 25

DATA IS DEEMED RELIABLE BUT IS NOT GUARANTEED ACCURATE BY THE REALTORS® ASSOCIATION OF EDMONTON. COPYRIGHT 2025 BY THE REALTORS® ASSOCIATION OF EDMONTON. ALL RIGHTS RESERVED. Trademarks are owned or controlled by the Canadian Real Estate Association (CREA) and identify real estate professionals who are members of CREA (REALTOR®, REALTORS®) and/or the quality of services they provide (MLS®, Multiple Listing Service®)

Listing information last updated on July 6th, 2025 at 2:33pm MDT