

# \$725,000 - 24008 Aspen Drive, Rural Rocky View County

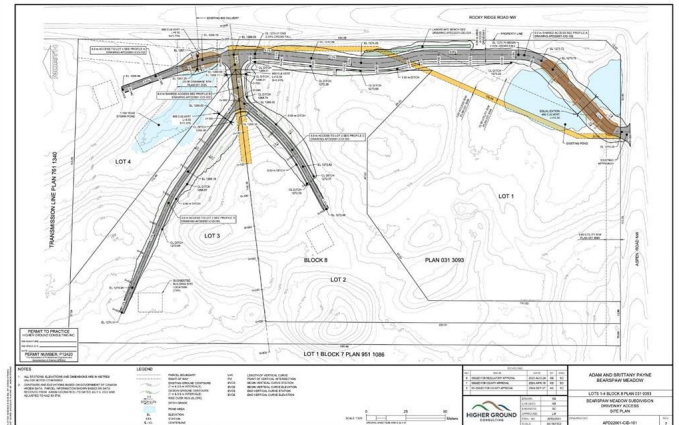
MLS® #A2185324

**\$725,000**

0 Bedroom, 0.00 Bathroom,  
Land on 4.03 Acres

NONE, Rural Rocky View County, Alberta

LOT 4 is the lot that is being offered for sale. Take advantage of one the very few 4 acre lots available in Bearspaw, just steps from the City Limits. This private lot is FULLY SERVICED, treed and is BEAUTIFUL. Easy access to everything. Shopping, YMCA, everything you'd need. No architectural controls in place. Build what you want, when you want. Don't wait too long, this opportunity will not last. The main road in will be paved once the construction has been completed on the homes. Call with any question!



## Essential Information

MLS® #	A2185324
Price	\$725,000
Bathrooms	0.00
Acres	4.03
Type	Land
Sub-Type	Residential Land
Status	Active

## Community Information

Address	24008 Aspen Drive
Subdivision	NONE
City	Rural Rocky View County
County	Rocky View County
Province	Alberta
Postal Code	T3R 1A5

**Additional Information**

Date Listed	January 3rd, 2025
Days on Market	123
Zoning	RUR

**Listing Details**

Listing Office	RE/MAX Real Estate (Central)
----------------	------------------------------

Data is supplied by Pillar 9â„¢ MLS® System. Pillar 9â„¢ is the owner of the copyright in its MLS® System. Data is deemed reliable but is not guaranteed accurate by Pillar 9â„¢. The trademarks MLS®, Multiple Listing Service® and the associated logos are owned by The Canadian Real Estate Association (CREA) and identify the quality of services provided by real estate professionals who are members of CREA. Used under license.