

\$765,000 - 308 Edith Place Nw, Calgary

MLS® #A2187947

\$765,000

3 Bedroom, 3.00 Bathroom, 2,016 sqft

Residential on 0.08 Acres

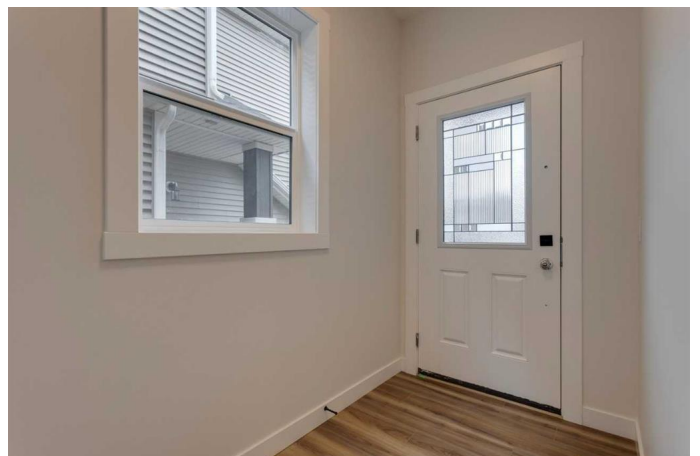
Glacier Ridge, Calgary, Alberta

Experience the perfect blend of style and comfort in this quick possession Shane Home. Nestled in the serene community of Glacier Ridge, this home offers thoughtful design and premium finishes. Features include: Central rear kitchen with a spacious island, ideal for entertaining Bright dining nook and rear living room with an elegant electric fireplace Second-floor central family room, providing privacy between the owner's bedroom and secondary bedrooms Luxurious rear owner's bedroom with a deluxe 4-piece ensuite and walk-in closet Two secondary bedrooms, each with walk-in closets Convenient second-floor laundry closet Three-piece main bath A deck for outdoor living \$5,000 landscaping voucher included Glacier Ridge offers natural beauty and convenient access to amenities. Please note, images are illustrative, and elevation and finishes may vary.

Built in 2025

Essential Information

MLS® #	A2187947
Price	\$765,000
Bedrooms	3
Bathrooms	3.00
Full Baths	2
Half Baths	1
Square Footage	2,016



Acres	0.08
Year Built	2025
Type	Residential
Sub-Type	Detached
Style	2 Storey
Status	Active

Community Information

Address	308 Edith Place Nw
Subdivision	Glacier Ridge
City	Calgary
County	Calgary
Province	Alberta
Postal Code	T3R2C9

Amenities

Amenities	None
Parking Spaces	4
Parking	Double Garage Detached
# of Garages	2

Interior

Interior Features	Built-in Features, Closet Organizers, Kitchen Island, No Animal Home, No Smoking Home, Open Floorplan, Pantry, Smart Home, Stone Counters
Appliances	Dishwasher, Dryer, Electric Oven, Gas Cooktop, Microwave, Range Hood, Refrigerator, Washer
Heating	Forced Air, Natural Gas
Cooling	None
Fireplace	Yes
# of Fireplaces	1
Fireplaces	Decorative, Electric
Has Basement	Yes
Basement	Full, Unfinished

Exterior

Exterior Features	Rain Gutters
Lot Description	Back Lane, Street Lighting
Roof	Asphalt Shingle

Construction	Cement Fiber Board, Stone, Stucco, Vinyl Siding, Wood Frame
Foundation	Poured Concrete

Additional Information

Date Listed	January 15th, 2025
Days on Market	156
Zoning	R-G
HOA Fees	400
HOA Fees Freq.	ANN

Listing Details

Listing Office	Bode Platform Inc.
----------------	--------------------

Data is supplied by Pillar 9â„¢ MLS® System. Pillar 9â„¢ is the owner of the copyright in its MLS® System. Data is deemed reliable but is not guaranteed accurate by Pillar 9â„¢. The trademarks MLS®, Multiple Listing Service® and the associated logos are owned by The Canadian Real Estate Association (CREA) and identify the quality of services provided by real estate professionals who are members of CREA. Used under license.