

# \$1,450,000 - 20 Cranna Lake Drive, Lacombe

MLS® #A2196977

**\$1,450,000**

0 Bedroom, 0.00 Bathroom,  
Land on 22.71 Acres

None, Lacombe, Alberta

What is your vision for this stunningly beautiful 22.71 acre property in the heart of the City of Lacombe? The land offers wonderful, year-round views of Lake Anne, Elizabeth Lake, Burman University, and the surrounding natural area. It is amazing to think that all of Lacombe and Burman's amenities are nearby when stepping foot onto this secluded and peaceful parcel.

## Essential Information

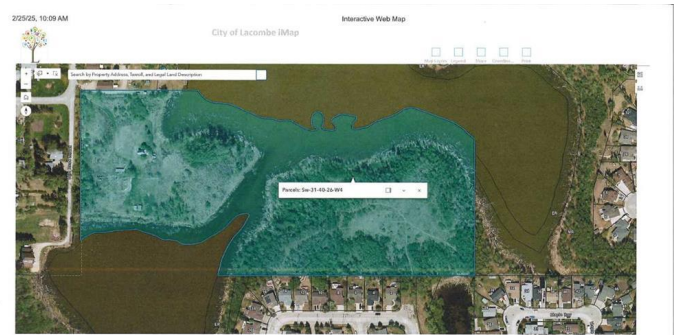
|           |                  |
|-----------|------------------|
| MLS® #    | A2196977         |
| Price     | \$1,450,000      |
| Bathrooms | 0.00             |
| Acres     | 22.71            |
| Type      | Land             |
| Sub-Type  | Residential Land |
| Status    | Active           |

## Community Information

|             |                      |
|-------------|----------------------|
| Address     | 20 Cranna Lake Drive |
| Subdivision | None                 |
| City        | Lacombe              |
| County      | Lacombe              |
| Province    | Alberta              |
| Postal Code | T4L 1S5              |

## Exterior

|                 |  |
|-----------------|--|
| Lot Description | Native Plants, Views, Wooded, Wetlands |
|-----------------|--|



## **Additional Information**

|                |                     |
|----------------|---------------------|
| Date Listed    | February 25th, 2025 |
| Days on Market | 70                  |
| Zoning         | FD                  |

## **Listing Details**

|                |                                |
|----------------|--------------------------------|
| Listing Office | Royal LePage Lifestyles Realty |
|----------------|--------------------------------|

Data is supplied by Pillar 9â„¸ MLSÂ® System. Pillar 9â„¸ is the owner of the copyright in its MLSÂ® System. Data is deemed reliable but is not guaranteed accurate by Pillar 9â„¸. The trademarks MLSÂ®, Multiple Listing ServiceÂ® and the associated logos are owned by The Canadian Real Estate Association (CREA) and identify the quality of services provided by real estate professionals who are members of CREA. Used under license.