

# \$109,900 - Block 1 Lot 4 Eastwood Ridge Estates, Rural Woodlands County

---

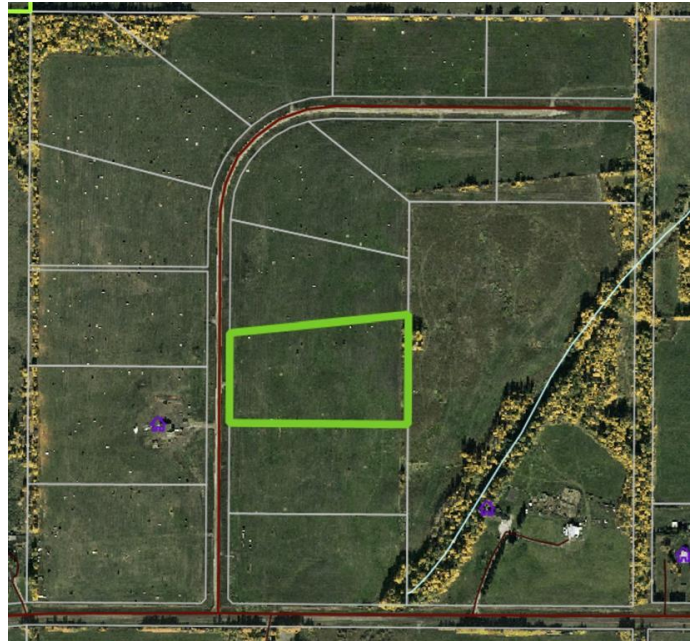
MLS® #A2204803

**\$109,900**

0 Bedroom, 0.00 Bathroom,  
Land on 7.81 Acres

NONE, Rural Woodlands County, Alberta

Lovely location just off the pavement east of Whitecourt. These lots range from 5 acres to 10.9 acres. Use your own developer to build your dream home. Lots have very good views, excellent roads, gas and power to the property lines, and good water in the area. GST included in the list price



## Essential Information

MLS® #	A2204803
Price	\$109,900
Bathrooms	0.00
Acres	7.81
Type	Land
Sub-Type	Residential Land
Status	Active

## Community Information

Address	Block 1 Lot 4 Eastwood Ridge Estates
Subdivision	NONE
City	Rural Woodlands County
County	Woodlands County
Province	Alberta
Postal Code	T7S 2A2

## Additional Information

Date Listed	March 22nd, 2025
Days on Market	57

Zoning

CR

## **Listing Details**

Listing Office

RE/MAX ADVANTAGE (WHITECOURT)

Data is supplied by Pillar 9â„¢ MLS® System. Pillar 9â„¢ is the owner of the copyright in its MLS® System. Data is deemed reliable but is not guaranteed accurate by Pillar 9â„¢. The trademarks MLS®, Multiple Listing Service® and the associated logos are owned by The Canadian Real Estate Association (CREA) and identify the quality of services provided by real estate professionals who are members of CREA. Used under license.