

\$10,800,000 - 48 Mission Road Sw, Calgary

MLS® #A2215980

\$10,800,000

0 Bedroom, 0.00 Bathroom,
Land on 0.14 Acres

Parkhill, Calgary, Alberta

Click brochure link for more details.

Developers / Investors Alert!

A rare land assembly opportunity in Calgary's central zone featuring 9 contiguous adjacent lots now offered for sale. Lots are 48, 54, 58, 62, 66, 70, 76, 82, and 86 Mission Road SW. This is a truly exceptional investment opportunity, ideally suited for multi-unit residential or commercial development. Located in the highly sought-after Parkhill community in southwest Calgary, near Mission Road, this inner-city site offers outstanding redevelopment potential in a prime urban location.

Total Land Area: Approx. 1.36 acres / 59,241 sq.ft. (approx. 5,503 square meters)

Lot Dimensions: Approx. 144 meters frontage
— 38 meters depth

Zoning: M-H1 / Direct Control (DC)

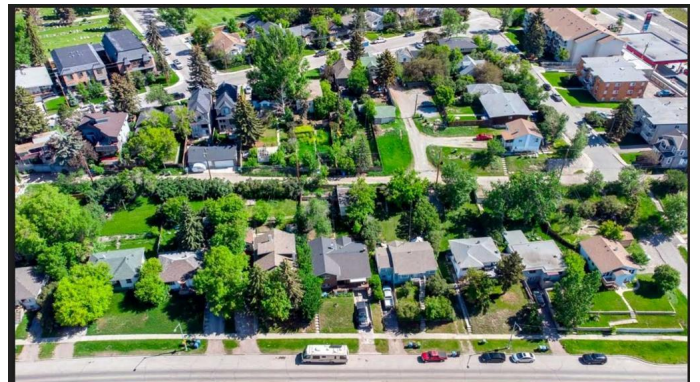
Floor Area Ratio (FAR): 4.0

Maximum Building Height: 26 meters

Possession: Immediate possession available

LRT Access: Just a short 500-meter walk to the nearest LRT station

This is a prime opportunity for visionary developers to secure a large-scale redevelopment site in one of Calgary's most vibrant and centrally connected communities!



Essential Information

MLS® #

A2215980

Price	\$10,800,000
Bathrooms	0.00
Acres	0.14
Type	Land
Sub-Type	Residential Land
Status	Active

Community Information

Address	48 Mission Road Sw
Subdivision	Parkhill
City	Calgary
County	Calgary
Province	Alberta
Postal Code	T2S 3A2

Additional Information

Date Listed	May 20th, 2025
Days on Market	75
Zoning	DC

Listing Details

Listing Office	Honestdoor Inc.
----------------	-----------------

Data is supplied by Pillar 9â„¢ MLS® System. Pillar 9â„¢ is the owner of the copyright in its MLS® System. Data is deemed reliable but is not guaranteed accurate by Pillar 9â„¢. The trademarks MLS®, Multiple Listing Service® and the associated logos are owned by The Canadian Real Estate Association (CREA) and identify the quality of services provided by real estate professionals who are members of CREA. Used under license.