

\$1,158,000 - 516 Quarry Way Se, Calgary

MLS® #A2218538

\$1,158,000

4 Bedroom, 4.00 Bathroom, 2,537 sqft

Residential on 0.16 Acres

Douglasdale/Glen, Calgary, Alberta

****OPEN HOUSE MAY 17 CANCELLED****

3,452 SQ.FT. TOTAL LIVING SPACE |

4-BEDS | 3.5 BATHS | GREEN SPACE +

VIEWS | TRIPLE CAR GARAGE |

OVERSIZED BACKYARD | Backing onto

green space and just steps from the Bow

River, this beautiful family home sits on a quiet

street in the heart of Quarry Park. Sitting on a

huge 7,000 sq.ft. lot with a triple car garage,

this home offers plenty of room inside and out.

The main floor features a bright, open layout

with premium wide plank hardwood and a

spacious living room with a gas fireplace -

perfect for movie nights or catching up with

friends. The chef's kitchen features a large

quartz island, gas range, soft-close drawers,

premium appliances (including upgraded Miele

dishwasher), and plenty of cabinet space. The

walk-through pantry helps keep everything in

its place, and the dining area opens to a

generous back deck overlooking the

extra-deep backyard and greenbelt beyond.

Upstairs, the primary suite includes a walk-in

closet with custom built-in organizer and a

luxurious ensuite with a dual vanity, built-in

makeup counter, soaker tub, large walk-in

shower, and private access to the upper-level

laundry room. A bonus room with built-ins, two

additional bedrooms with custom shelving, and

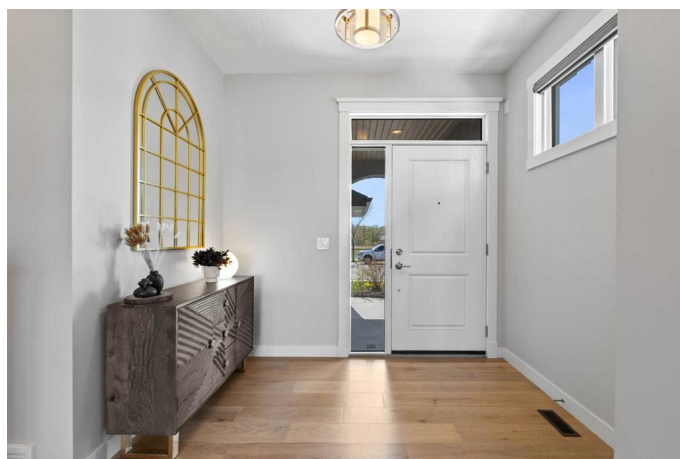
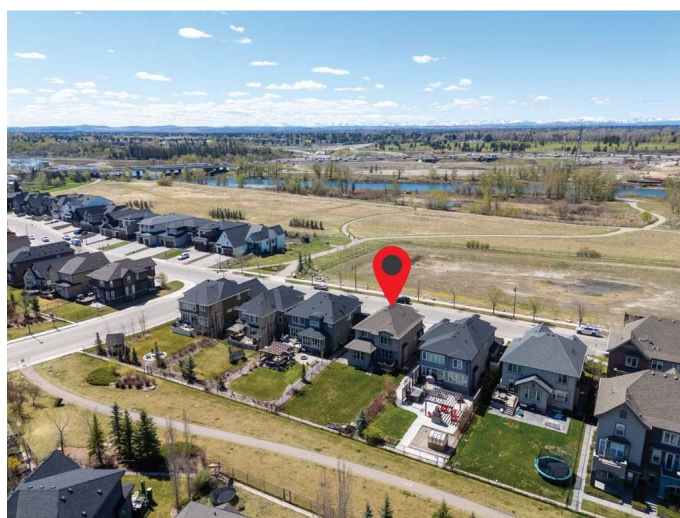
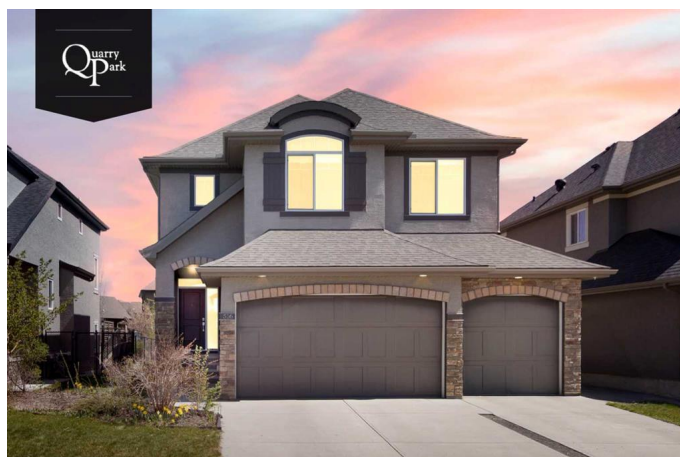
a full bath complete the upper floor. Hunter

Douglas blinds add a polished look throughout

the home. The finished basement adds even

more flexible living space with a large rec area,

fourth bedroom, and full bath - ideal for guests,



teens, or weekend hangouts. Additional upgrades include a water softener, radon mitigation system, and a new hot water tank. Living in Quarry Park means youâ€™re close to everything. Riverside pathways, the Remington YMCA, shopping, restaurants, parks, and a quick commute downtown. If you're looking for estate living in a prime location near the river, this one checks all the boxes. Reach out to book your showing.

Built in 2014

Essential Information

MLS® #	A2218538
Price	\$1,158,000
Bedrooms	4
Bathrooms	4.00
Full Baths	3
Half Baths	1
Square Footage	2,537
Acres	0.16
Year Built	2014
Type	Residential
Sub-Type	Detached
Style	2 Storey
Status	Active

Community Information

Address	516 Quarry Way Se
Subdivision	Douglasdale/Glen
City	Calgary
County	Calgary
Province	Alberta
Postal Code	T2C 5H7

Amenities

Amenities	Other
Parking Spaces	6

Parking	Triple Garage Attached
# of Garages	3

Interior

Interior Features	Double Vanity, High Ceilings, Kitchen Island, No Animal Home, No Smoking Home, Open Floorplan, Pantry, Quartz Counters, Recessed Lighting
Appliances	Built-In Oven, Dishwasher, Dryer, Gas Range, Microwave, Range Hood, Refrigerator, Washer, Window Coverings, Water Softener
Heating	Forced Air
Cooling	None
Fireplace	Yes
# of Fireplaces	1
Fireplaces	Gas
Has Basement	Yes
Basement	Finished, Full

Exterior

Exterior Features	Other
Lot Description	Back Yard, Backs on to Park/Green Space, Front Yard, Landscaped, Lawn, Views, Environmental Reserve
Roof	Asphalt Shingle
Construction	Stone, Stucco, Wood Frame
Foundation	Poured Concrete

Additional Information

Date Listed	May 8th, 2025
Days on Market	16
Zoning	DC
HOA Fees	283
HOA Fees Freq.	ANN

Listing Details

Listing Office	Real Broker
----------------	-------------

Data is supplied by Pillar 9â„¢ MLS® System. Pillar 9â„¢ is the owner of the copyright in its MLS® System. Data is deemed reliable but is not guaranteed accurate by Pillar 9â„¢. The trademarks MLS®, Multiple Listing Service® and the associated logos are owned by The Canadian Real Estate Association (CREA) and identify the quality of services provided by real estate professionals who are members of CREA. Used under license.