

# \$12 - 110, 333 6 Street S, Lethbridge

MLS® #A2219659

**\$12**

0 Bedroom, 0.00 Bathroom,  
Commercial on 0.36 Acres

Downtown, Lethbridge, Alberta

What an amazing opportunity to be part of Lethbridge's downtown core. Wide open space ready for you to put your touches on and make your own. Just a minutes walk from Festival Square and other amazing amenities. Great for so many uses, let your imagination fill the space.

## Essential Information

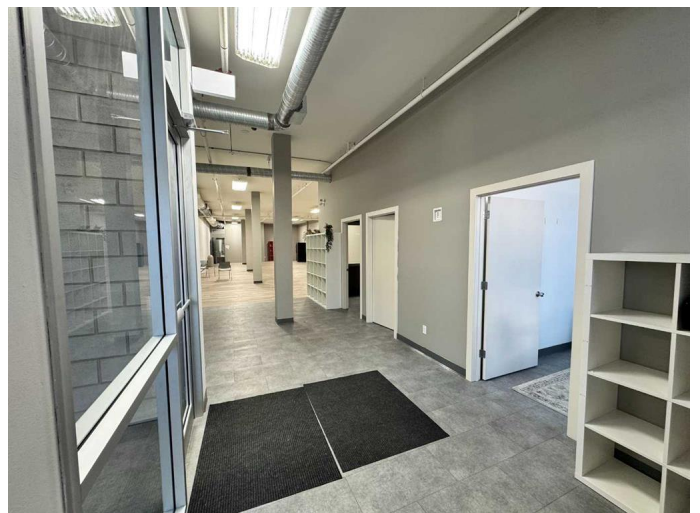
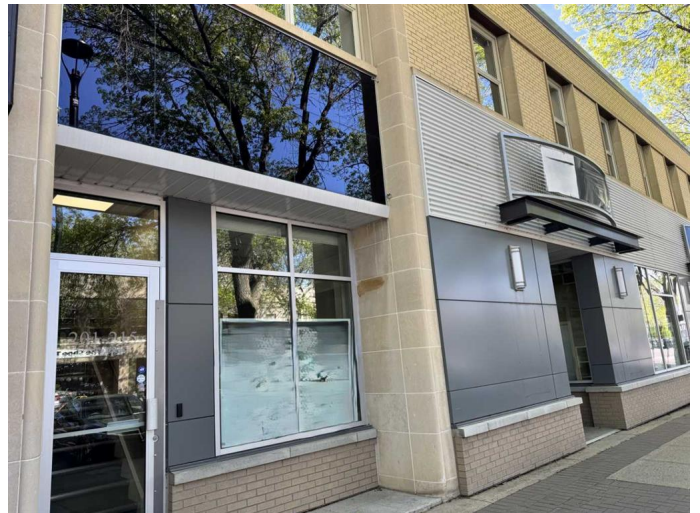
MLS® #	A2219659
Price	\$12
Bathrooms	0.00
Acres	0.36
Type	Commercial
Sub-Type	Retail
Status	Active

## Community Information

Address	110, 333 6 Street S
Subdivision	Downtown
City	Lethbridge
County	Lethbridge
Province	Alberta
Postal Code	T1J0N6

## Additional Information

Date Listed	May 12th, 2025
Days on Market	18
Zoning	C-D



**Listing Details**

Listing Office                  Royal LePage South Country - Lethbridge

Data is supplied by Pillar 9â,,ç MLSÂ® System. Pillar 9â,,ç is the owner of the copyright in its MLSÂ® System. Data is deemed reliable but is not guaranteed accurate by Pillar 9â,,ç. The trademarks MLSÂ®, Multiple Listing ServiceÂ® and the associated logos are owned by The Canadian Real Estate Association (CREA) and identify the quality of services provided by real estate professionals who are members of CREA. Used under license.