

# \$439,000 - 68 Cameron Close, Sylvan Lake

MLS® #A2220087

**\$439,000**

3 Bedroom, 3.00 Bathroom, 1,509 sqft

Residential on 0.08 Acres

Crestview, Sylvan Lake, Alberta

Welcome to this beautifully finished 3-bedroom, 2.5-bath half duplex located on a quiet, family-friendly close in Sylvan Lake. With a double attached garage, quartz countertops, and a walkout basement, this home blends functionality with modern style—ideal for first-time buyers, downsizers, or investors.

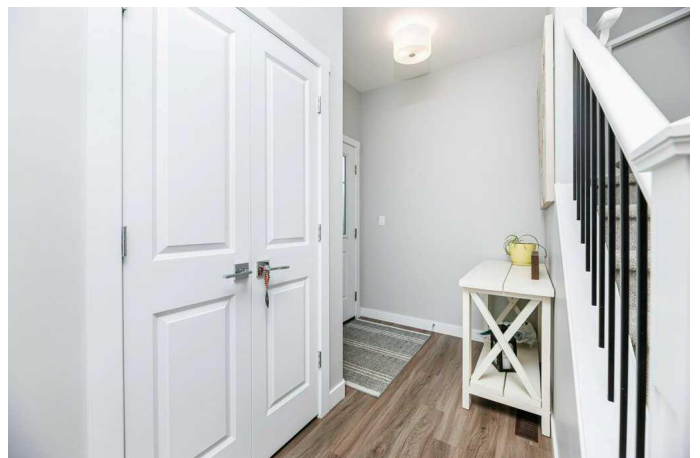
Step inside to an open-concept main floor filled with natural light. The kitchen features sleek quartz countertops, ample cabinetry, and a spacious island perfect for meal prep or casual dining. The living and dining areas open to a raised back deck overlooking the fully fenced yard, making it easy to relax or entertain in your own private outdoor space.

Upstairs, you'll find three comfortable bedrooms, including a spacious primary suite with a walk-in closet and full ensuite. Two additional bedrooms, a full bath and the laundry room complete the upper level, with a convenient half bath on the main floor for guests.

Located just minutes from the lake, schools, parks, and shopping, this home offers the perfect balance of peaceful living and everyday convenience.

Built in 2018

## Essential Information



MLS® #	A2220087
Price	\$439,000
Bedrooms	3
Bathrooms	3.00
Full Baths	2
Half Baths	1
Square Footage	1,509
Acres	0.08
Year Built	2018
Type	Residential
Sub-Type	Semi Detached
Style	2 Storey, Side by Side
Status	Active

### **Community Information**

Address	68 Cameron Close
Subdivision	Crestview
City	Sylvan Lake
County	Red Deer County
Province	Alberta
Postal Code	T4S 0N5

### **Amenities**

Parking Spaces	4
Parking	Double Garage Attached
# of Garages	2

### **Interior**

Interior Features	Kitchen Island, Open Floorplan, Pantry, Quartz Counters, Separate Entrance, Storage, Vinyl Windows, Walk-In Closet(s)
Appliances	Central Air Conditioner, Dishwasher, Microwave Hood Fan, Refrigerator, Stove(s), Washer/Dryer, Window Coverings
Heating	Forced Air, Natural Gas
Cooling	Central Air
Fireplace	Yes
# of Fireplaces	1
Fireplaces	Electric
Has Basement	Yes
Basement	Full, Unfinished, Walk-Out

**Exterior**

Exterior Features	Private Yard
Lot Description	Front Yard, Landscaped
Roof	Asphalt Shingle
Construction	Vinyl Siding, Asphalt
Foundation	Poured Concrete

**Additional Information**

Date Listed	May 11th, 2025
Days on Market	8
Zoning	R5A

**Listing Details**

Listing Office	Royal LePage Network Realty Corp.
----------------	-----------------------------------

Data is supplied by Pillar 9â„¢ MLS® System. Pillar 9â„¢ is the owner of the copyright in its MLS® System. Data is deemed reliable but is not guaranteed accurate by Pillar 9â„¢. The trademarks MLS®, Multiple Listing Service® and the associated logos are owned by The Canadian Real Estate Association (CREA) and identify the quality of services provided by real estate professionals who are members of CREA. Used under license.