

# \$529,900 - 202, 830 Centre Avenue Ne, Calgary

MLS® #A2221773

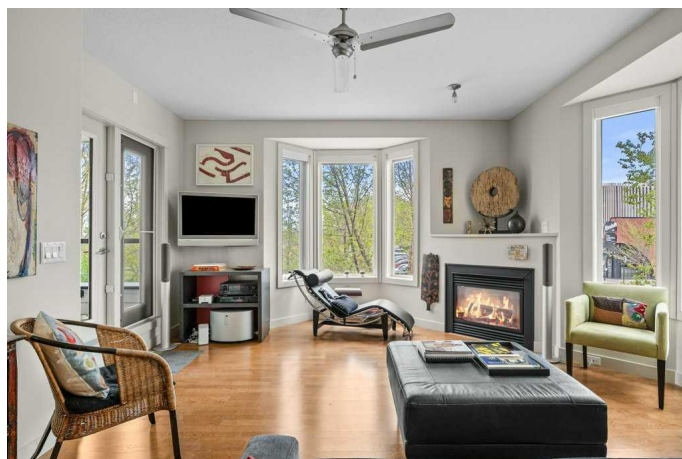
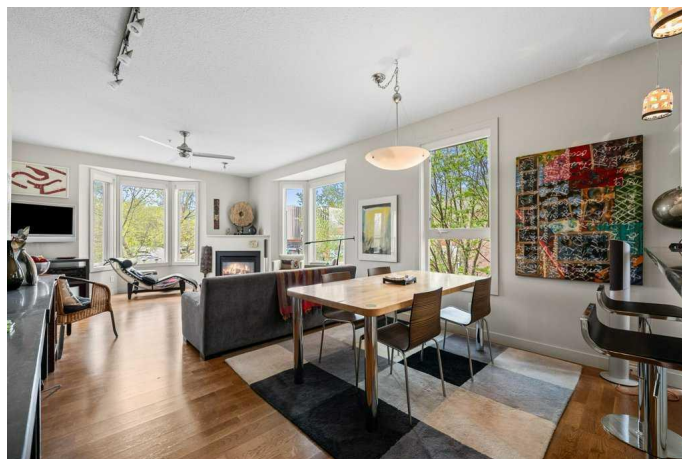
**\$529,900**

2 Bedroom, 2.00 Bathroom, 1,174 sqft

Residential on 0.00 Acres

Bridgeland/Riverside, Calgary, Alberta

Enjoy all that inner city living has to offer! This outstanding corner unit is situated in a prime location in the vibrant community of Bridgeland. An abundance of large windows fills the spaces with natural light. Turnkey living complete with 2 large bedrooms, 2 full baths, plus a dedicated den/office. Located on both the south and west corners of the building overlooking beautiful Murdoch Park. This original owner unit has been well maintained and nicely updated. The open main living areas offer 2 walls full of windows and houses the kitchen, dining area and living room. The full-sized kitchen features granites countertops, tile floor, ample amounts of cabinetry and stainless-steel appliances. Adjacent dining area with space to easily seat 6-8. The spacious living room is highlighted by the corner gas fireplace and access to the oversized south facing balcony. Convenient den/office is tucked away just off the kitchen & is perfect for a home office set-up. Walk down the hall to the other side of the unit to the generous primary bedroom featuring access to the balcony and a private ensuite bath with relaxing soaker tub & separate shower. The second bedroom & 4-piece bath are ideal for guests. Other highlights include in-suite laundry, speaker wires hidden in the baseboards, assigned secured, heated underground parking stall, and a n assigned storage locker. Hard to beat this premium location! Steps to many eclectic shops and services, restaurants, coffee shops, and



specialty grocery stores. Minutes to the C-train station, downtown core, Foothills hospital and SAIT. Enjoy seasonal festivals, night markets, and live music events and outdoor activities all at your doorstep. The perfect blend of enough size to feel like home and the ease of inner city condo living!

Built in 2003

### **Essential Information**

MLS® #	A2221773
Price	\$529,900
Bedrooms	2
Bathrooms	2.00
Full Baths	2
Square Footage	1,174
Acres	0.00
Year Built	2003
Type	Residential
Sub-Type	Apartment
Style	Single Level Unit
Status	Active

### **Community Information**

Address	202, 830 Centre Avenue Ne
Subdivision	Bridgeland/Riverside
City	Calgary
County	Calgary
Province	Alberta
Postal Code	T2E 9C3

### **Amenities**

Amenities	Car Wash, Elevator(s), Parking, Storage
Parking Spaces	1
Parking	Parkade, Stall, Underground

### **Interior**

Interior Features	Breakfast Bar, Ceiling Fan(s), Elevator, Granite Counters, High Ceilings,
-------------------	---

	Open Floorplan
Appliances	Dishwasher, Dryer, Electric Stove, Microwave Hood Fan, Refrigerator, Washer, Window Coverings
Heating	In Floor
Cooling	None
Fireplace	Yes
# of Fireplaces	1
Fireplaces	Gas
# of Stories	4

## Exterior

Exterior Features	Balcony
Roof	Tar/Gravel
Construction	Brick, Wood Frame

## Additional Information

Date Listed	May 16th, 2025
Days on Market	3
Zoning	DC

## Listing Details

Listing Office	RE/MAX House of Real Estate
----------------	-----------------------------

Data is supplied by Pillar 9â„¢ MLSÂ® System. Pillar 9â„¢ is the owner of the copyright in its MLSÂ® System. Data is deemed reliable but is not guaranteed accurate by Pillar 9â„¢. The trademarks MLSÂ®, Multiple Listing ServiceÂ® and the associated logos are owned by The Canadian Real Estate Association (CREA) and identify the quality of services provided by real estate professionals who are members of CREA. Used under license.