

\$449,900 - 452007 Range Road 281, Rural Wetaskiwin No. 10, County of

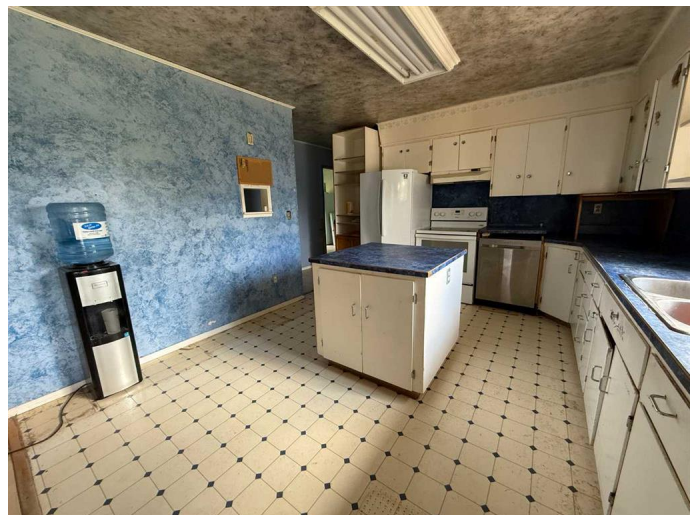
MLS® #A2222934

\$449,900

5 Bedroom, 3.00 Bathroom, 2,545 sqft
Residential on 10.11 Acres

NONE, Rural Wetaskiwin No. 10, County of, Alberta

Acreage living at its finest! This spacious 5-bedroom, 3-bathroom home is situated on over 10 acres of private, serene landâ€”offering the perfect opportunity to put down roots in a peaceful country setting. With great bones and a large, open layout, this property provides endless potential for your dream rural lifestyle. From the moment you step inside, youâ€™re welcomed by a bright and open living area that flows seamlessly into the kitchenâ€”ideal for everyday living and entertaining. The primary suite is located on the upper level and features a walk-in closet and private ensuite bathroom for added comfort and privacy. The main floor hosts three additional generously sized bedrooms as well as a full bathroom combined with the laundry roomâ€”complete with a new washer and dryer unit (2024) for added convenience. Just a few steps down, youâ€™ll find another full bathroom, and the basement level offers a fifth bedroom and an operational wood-burning fireplace, adding warmth and charm. The unfinished portion of the basement provides a blank slate for future developmentâ€”tailor it to your needs with additional living space, a workshop, or recreation area. The attached double garage ensures your vehicles and outdoor equipment are protected year-round. Outside, the property shines with two greenhouses for the avid gardener and a



variety of thriving fruit trees and bushesâ€”including plum, apple, pear, and crabapple trees, along with Saskatoon berries, raspberries, and ornamental almond bushes. A large barn and several additional outbuildings add to the functionality of the land, whether you're dreaming of a hobby farm or need storage for equipment and tools. Recent upgrades include a new septic tank and mound (Fall 2024), a new washer/dryer unit (2024), and new exterior doors (2019). This is an incredible opportunity to own a well-maintained acreage with space to grow, create, and enjoy the rural lifestyle you've been dreaming of!

Built in 1978

Essential Information

MLS® #	A2222934
Price	\$449,900
Bedrooms	5
Bathrooms	3.00
Full Baths	3
Square Footage	2,545
Acres	10.11
Year Built	1978
Type	Residential
Sub-Type	Detached
Style	Acreage with Residence, Bungalow
Status	Active

Community Information

Address	452007 Range Road 281
Subdivision	NONE
City	Rural Wetaskiwin No. 10, County of
County	Wetaskiwin No. 10, County of
Province	Alberta
Postal Code	T0C 1Z0

Amenities

Parking Spaces	2
Parking	Double Garage Attached
# of Garages	2

Interior

Interior Features	See Remarks
Appliances	Dishwasher, Refrigerator, Stove(s), Washer/Dryer
Heating	Forced Air
Cooling	None
Fireplace	Yes
# of Fireplaces	1
Fireplaces	Wood Burning, Basement
Has Basement	Yes
Basement	Partial, Unfinished

Exterior

Exterior Features	None
Lot Description	Fruit Trees/Shrub(s), Lawn, Many Trees, Private
Roof	Asphalt Shingle
Construction	Vinyl Siding
Foundation	Block

Additional Information

Date Listed	May 21st, 2025
Days on Market	3
Zoning	AG

Listing Details

Listing Office	RE/MAX real estate central alberta
----------------	------------------------------------

Data is supplied by Pillar 9â„¢ MLSÂ® System. Pillar 9â„¢ is the owner of the copyright in its MLSÂ® System. Data is deemed reliable but is not guaranteed accurate by Pillar 9â„¢. The trademarks MLSÂ®, Multiple Listing ServiceÂ® and the associated logos are owned by The Canadian Real Estate Association (CREA) and identify the quality of services provided by real estate professionals who are members of CREA. Used under license.