

\$309,000 - 4202, 10 Prestwick Bay Se, Calgary

MLS® #A2233497

\$309,000

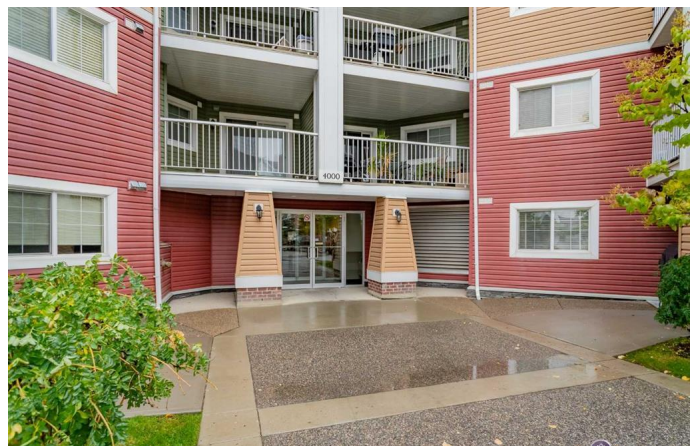
2 Bedroom, 2.00 Bathroom, 924 sqft

Residential on 0.00 Acres

McKenzie Towne, Calgary, Alberta

Welcome to The Pointe at Prestwick !! This 2 Bedroom 2 Bathroom End Unit is in the SE corner of McKenzie Towne and features an open concept floorplan with light maple cabinets, in- suite laundry and a heated underground parking stall. All located in this highly walkable location, close to shopping, dining, and amenities of 130th Avenue. Surrounded by schools, playgrounds, the Prestwick Spray Park, and so much more. Monthly condo fees include your heat, water, and electricity as well.

Built in 2006



Essential Information

MLS® #	A2233497
Price	\$309,000
Bedrooms	2
Bathrooms	2.00
Full Baths	2
Square Footage	924
Acres	0.00
Year Built	2006
Type	Residential
Sub-Type	Apartment
Style	Single Level Unit
Status	Active

Community Information

Address 4202, 10 Prestwick Bay Se

Subdivision	McKenzie Towne
City	Calgary
County	Calgary
Province	Alberta
Postal Code	T2Z0B4

Amenities

Amenities	Elevator(s), Storage, Visitor Parking
Parking Spaces	1
Parking	Stall, Underground

Interior

Interior Features	Open Floorplan, See Remarks
Appliances	Dishwasher, Dryer, Electric Stove, Range Hood, Refrigerator, Washer, Window Coverings
Heating	Baseboard, Natural Gas
Cooling	None
# of Stories	4

Exterior

Exterior Features	Balcony
Roof	Asphalt Shingle
Construction	Wood Frame

Additional Information

Date Listed	June 20th, 2025
Days on Market	3
Zoning	M-2
HOA Fees Freq.	ANN

Listing Details

Listing Office	Boutique Properties Inc.
----------------	--------------------------

Data is supplied by Pillar 9â„¢ MLS® System. Pillar 9â„¢ is the owner of the copyright in its MLS® System. Data is deemed reliable but is not guaranteed accurate by Pillar 9â„¢. The trademarks MLS®, Multiple Listing Service® and the associated logos are owned by The Canadian Real Estate Association (CREA) and identify the quality of services provided by real estate professionals who are members of CREA. Used under license.