

# \$682,395 - 116, 109 Bow Meadow Crescent, Canmore

MLS® #A2233602

**\$682,395**

0 Bedroom, 0.00 Bathroom,  
Commercial on 0.00 Acres

Elk Run, Canmore, Alberta

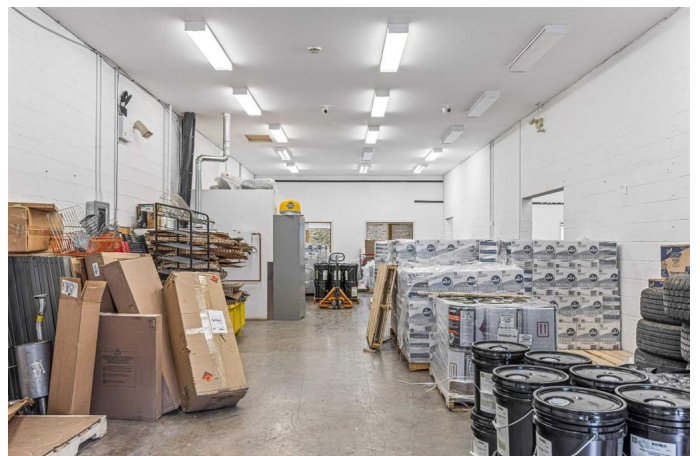
Discover a prime commercial opportunity at 116, 120 Bow Meadow Crescent—a versatile 1,077 sq. ft. commercial bay in Canmore’s sought-after Elk Run district. With local vacancy rates near zero, this unit offers a strategic acquisition for investors or entrepreneurs looking to establish or expand operations.

Zoned for a wide range of uses—including brewery/distillery, professional laundry services, contractor facilities, creative studios, warehouse/storage, or premium workshop space—this adaptable unit also allows for discretionary applications, offering added flexibility for specialized business concepts.

Located in a professionally managed complex with reasonable condo fees and a strong reserve fund, the property ensures financial stability and predictable operating costs. In a market defined by limited inventory and strong demand, this unit represents a rare chance to secure space in one of Alberta’s most dynamic commercial real estate environments.

Whether for immediate business use or long-term investment, this offering delivers both practical utility and strong upside potential.

Built in 2003



## Essential Information

MLS® #	A2233602
Price	\$682,395
Bathrooms	0.00
Acres	0.00
Year Built	2003
Type	Commercial
Sub-Type	Mixed Use
Status	Active

## Community Information

Address	116, 109 Bow Meadow Crescent
Subdivision	Elk Run
City	Canmore
County	Bighorn No. 8, M.D. of
Province	Alberta
Postal Code	T1W 2W8

## Additional Information

Date Listed	June 23rd, 2025
Days on Market	4
Zoning	Ind 2

## Listing Details

Listing Office	MaxWell Capital Realty
----------------	------------------------

Data is supplied by Pillar 9â„¢ MLS® System. Pillar 9â„¢ is the owner of the copyright in its MLS® System. Data is deemed reliable but is not guaranteed accurate by Pillar 9â„¢. The trademarks MLS®, Multiple Listing Service® and the associated logos are owned by The Canadian Real Estate Association (CREA) and identify the quality of services provided by real estate professionals who are members of CREA. Used under license.