

\$1,990,000 - 30108 Range Road 55, Rural Mountain View County

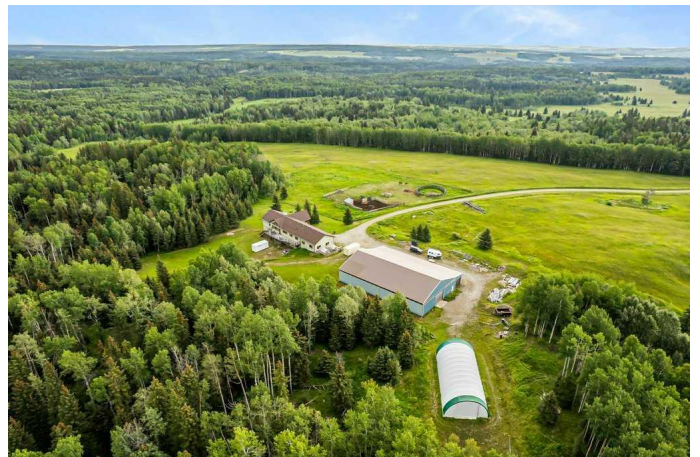
MLS® #A2237789

\$1,990,000

3 Bedroom, 3.00 Bathroom, 2,571 sqft
Residential on 150.00 Acres

NONE, Rural Mountain View County, Alberta

Stunning location just 10 minutes west of Water Valley. This beautiful 150-acre fenced and gated property offers a rare blend of open pasture, spacious yard, and dense forest with meandering creeks, creating an ideal setting for nature lovers, hunters and horse enthusiasts alike. Approximately 50 acres are dedicated to hay and pasture, while the balance is mature forest, offering privacy and recreational opportunities. North boundary is country grazing land and crown land is close by. Set up for a few horses with corrals and a round-pen, the property includes a massive 100' x 75' indoor riding arena with a full-length 16' side storage area along the east side—perfect for equipment, tack, and feed. The unique 2,571 square foot walkout bungalow features vaulted ceilings and warm fir finishing throughout. The open-concept main living space includes a wood-burning stove, a huge kitchen ideal for gatherings, and a cozy family room perfect for relaxing. The spacious primary suite is located just off the living area and boasts a luxurious ensuite with a freestanding tub, dual vanities, water closet, brand new shower, wet sauna, and an expansive walk-in closet with custom cabinetry. The main floor also includes a second living area, flex space that was previously a second kitchen and a convenient laundry room complete with a full bathroom, utility sink, and a shower that is also handy as



a dog wash station. The bright and spacious lower walkout level includes a large living and recreation room, a full second kitchen, two generous bedrooms, a newly finished four-piece bath, another laundry station, plenty of storage, and a beautiful office with built-in cabinetryâ€”ideal for working from home. A great space for multi-generational living. Additional features include a heated triple attached garage, 30'x65' tarp storage building, back up natural gas generator, two greenhouses for gardening, wood boiler system for the house in-floor heat and a massive west-facing deck to enjoy summer evenings. This exceptional property must be seen to be truly appreciated. Book your showing today!

Built in 2011

Essential Information

MLS® #	A2237789
Price	\$1,990,000
Bedrooms	3
Bathrooms	3.00
Full Baths	3
Square Footage	2,571
Acres	150.00
Year Built	2011
Type	Residential
Sub-Type	Detached
Style	Acreage with Residence, Bungalow
Status	Active

Community Information

Address	30108 Range Road 55
Subdivision	NONE
City	Rural Mountain View County
County	Mountain View County
Province	Alberta

Postal Code T0M 2E0

Amenities

Parking Spaces 3
Parking Triple Garage Attached
of Garages 2

Interior

Interior Features Ceiling Fan(s), Closet Organizers, Double Vanity, High Ceilings, Wood Counters, Natural Woodwork, Sauna, Sump Pump(s), Vaulted Ceiling(s)
Appliances Dishwasher, Dryer, Gas Range, Refrigerator, Washer
Heating In Floor, Forced Air, Natural Gas, Wood, Wood Stove
Cooling None
Fireplace Yes
of Fireplaces 1
Fireplaces Wood Burning Stove
Has Basement Yes
Basement Finished, Full, Walk-Out

Exterior

Exterior Features Private Entrance, Private Yard
Lot Description Many Trees, Views, Creek/River/Stream/Pond, Farm, No Neighbours Behind, Native Plants, Pasture
Roof Asphalt Shingle
Construction Stucco
Foundation Poured Concrete

Additional Information

Date Listed July 25th, 2025
Days on Market 18
Zoning AG

Listing Details

Listing Office CIR Realty

Data is supplied by Pillar 9â„¢ MLS® System. Pillar 9â„¢ is the owner of the copyright in its MLS® System. Data is deemed reliable but is not guaranteed accurate by Pillar 9â„¢. The trademarks MLS®, Multiple Listing Service® and the associated logos are owned by The Canadian Real Estate Association (CREA) and identify the quality of services provided by real estate professionals who are members of CREA. Used under license.