

\$5,800,000 - 53128 Range Road 21, Rural Parkland County

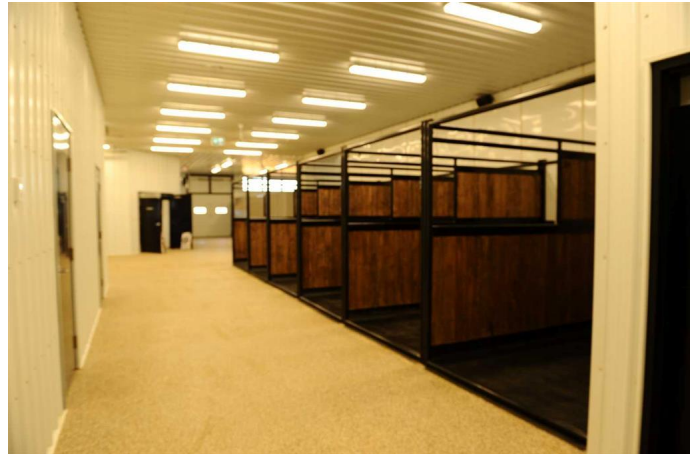
MLS® #A2237969

\$5,800,000

0 Bedroom, 0.00 Bathroom,
Agri-Business on 0.00 Acres

NONE, Rural Parkland County, Alberta

A turnkey equine facility, 2 homes
2,260sqft/1,207sqft; 2 indoor areas,
44,853sqft/11,100 sqft; 1 outdoor area
18,000sqft; 44 indoor stalls; 50
paddocks/pens; 3 out buildings avg 3,800sqft
each.



Essential Information

| | |
|-----------|---------------|
| MLS® # | A2237969 |
| Price | \$5,800,000 |
| Bathrooms | 0.00 |
| Acres | 0.00 |
| Type | Agri-Business |
| Sub-Type | Agriculture |
| Status | Active |

Community Information

| | |
|-------------|-----------------------|
| Address | 53128 Range Road 21 |
| Subdivision | NONE |
| City | Rural Parkland County |
| County | Parkland County |
| Province | Alberta |
| Postal Code | T0E 0N0 |

Additional Information

| | |
|----------------|----------------|
| Date Listed | July 8th, 2025 |
| Days on Market | 58 |
| Zoning | AG |

Listing Details

Listing Office CDN Global Advisors Ltd.

Data is supplied by Pillar 9â,,ç MLSÂ® System. Pillar 9â,,ç is the owner of the copyright in its MLSÂ® System. Data is deemed reliable but is not guaranteed accurate by Pillar 9â,,ç. The trademarks MLSÂ®, Multiple Listing ServiceÂ® and the associated logos are owned by The Canadian Real Estate Association (CREA) and identify the quality of services provided by real estate professionals who are members of CREA. Used under license.